

LEGEND

- Application Site Boundary
- Proposed Turbine Location
- Proposed Crane Hardstanding
- Proposed Turning Head
- Proposed Track Alignment**
- Proposed
- Peat Probe Location

Peat Depth (m)

- 0
- 0 - 0.5
- 0.5 - 1
- 1 - 1.5
- 1.5 - 2
- 2 - 2.5
- 2.5 - 3

**BALMEANACH
WIND FARM LIMITED**

SLR

BALMEANACH WIND FARM - SEI

TA 10.2 – PMP

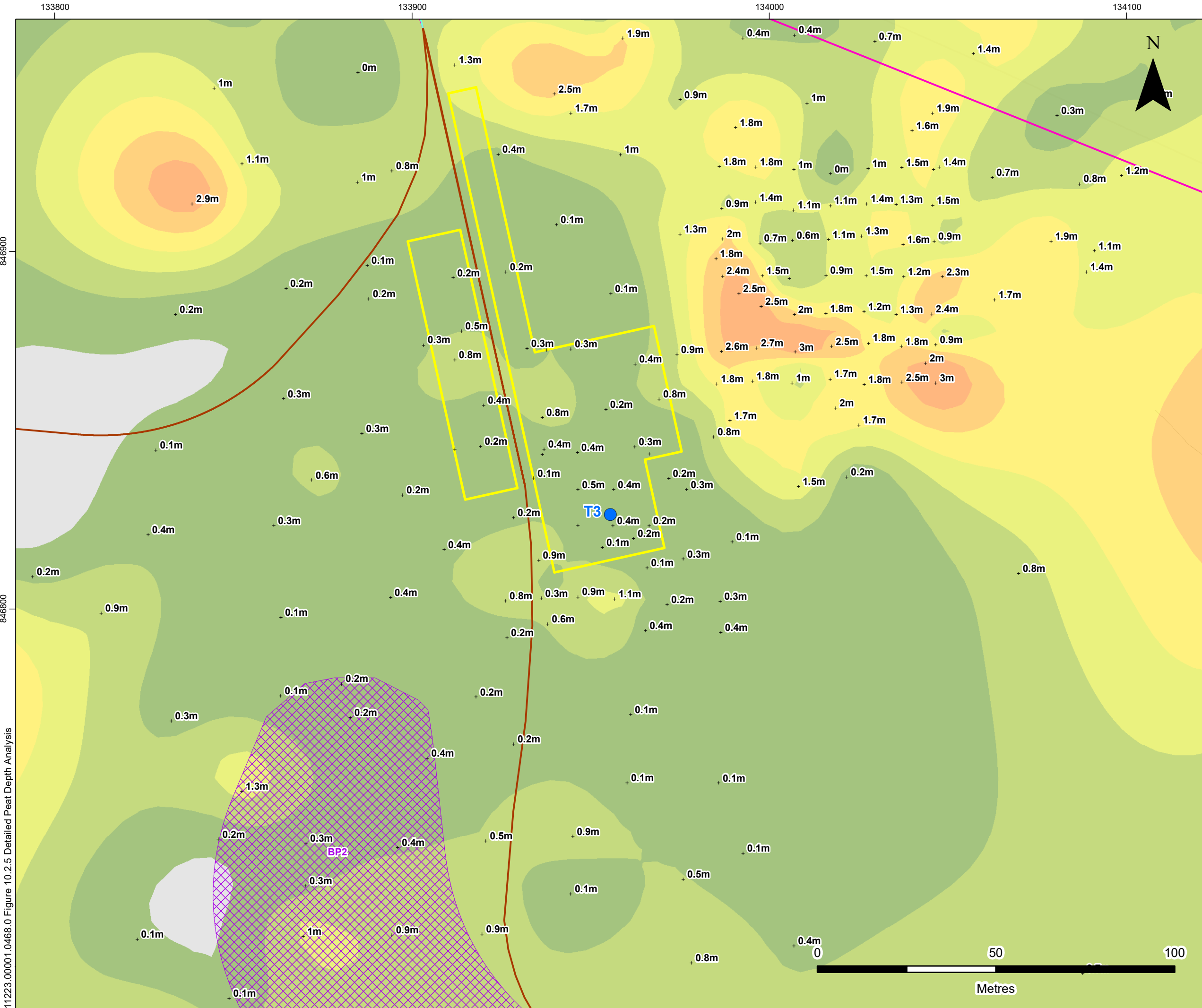
**DETAILED PEAT DEPTH
ANALYSIS FOR TURBINES**

SEI FIGURE 10.2.5a

Scale 1:1,000 @ A3

Date APRIL 2025

11223.00001.0468.0 Figure 10.2.5 Detailed Peat Depth Analysis



LEGEND

- Application Site Boundary
- Proposed Turbine Location
- Proposed Crane Hardstanding
- Potential Borrow Pit
- Proposed Track Alignment**
 - Proposed
 - Proposed Option A
 - Proposed Option B
- Peat Probe Location

Peat Depth (m)

| |
|---------|
| 0 |
| 0 - 0.5 |
| 0.5 - 1 |
| 1 - 1.5 |
| 1.5 - 2 |
| 2 - 2.5 |
| 2.5 - 3 |

**BALMEANACH
WIND FARM LIMITED**

SLR

BALMEANACH WIND FARM - SEI

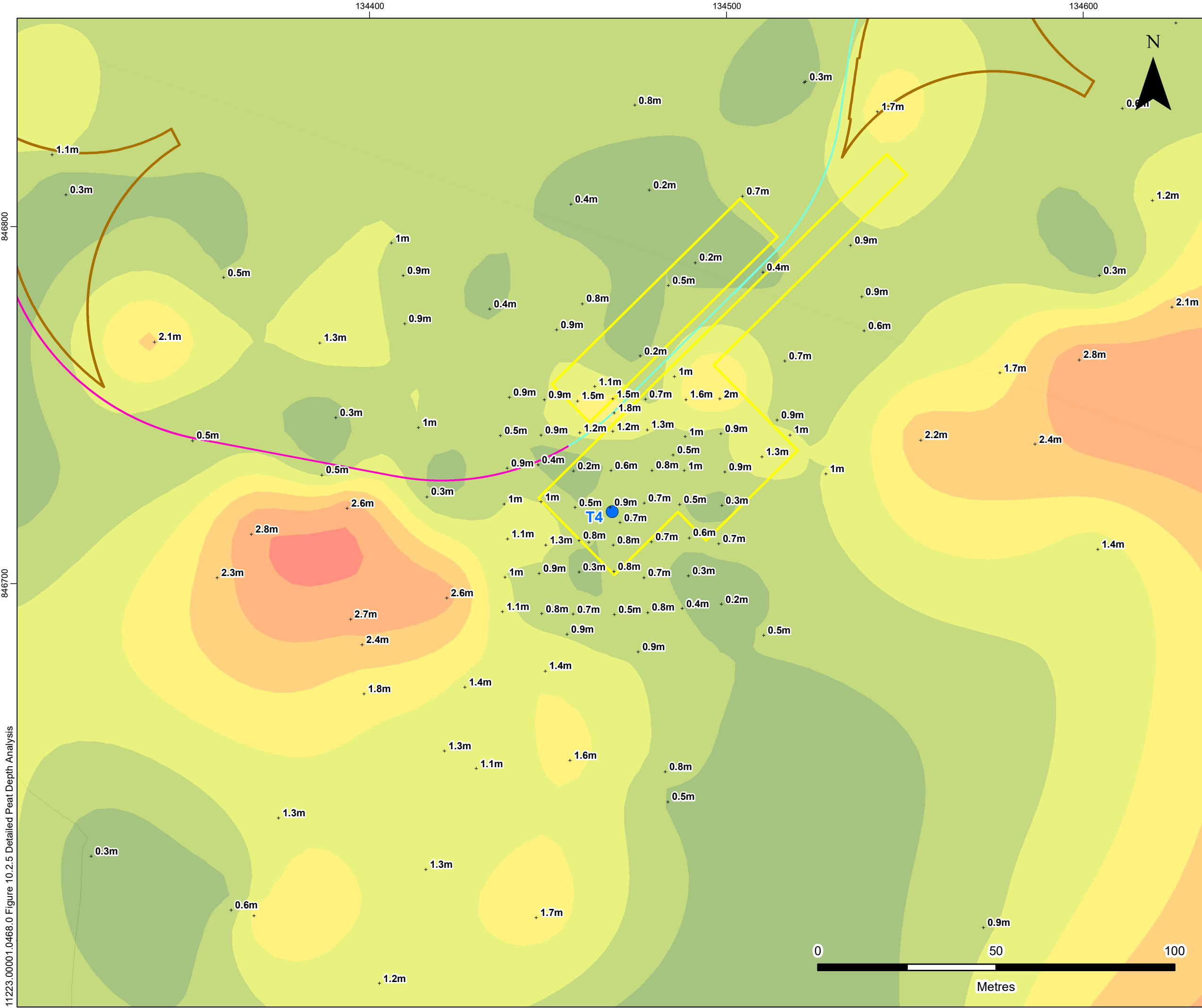
TA 10.2 – PMP

**DETAILED PEAT DEPTH
ANALYSIS FOR TURBINES**

SEI FIGURE 10.2.5b

Scale 1:1,000 @ A3

Date APRIL 2025



LEGEND

- Application Site Boundary
- Proposed Turbine Location
- Proposed Crane Hardstanding
- Proposed Turning Head
- Proposed Track Alignment**
 - Proposed Option A
 - Proposed Option B
- Peat Probe Location

Peat Depth (m)

| |
|---------|
| 0 - 0.5 |
| 0.5 - 1 |
| 1 - 1.5 |
| 1.5 - 2 |
| 2 - 2.5 |
| 2.5 - 3 |
| > 3 |

BALMEANACH WIND FARM LIMITED

SLR

BALMEANACH WIND FARM - SEI

TA 10.2 – PMP

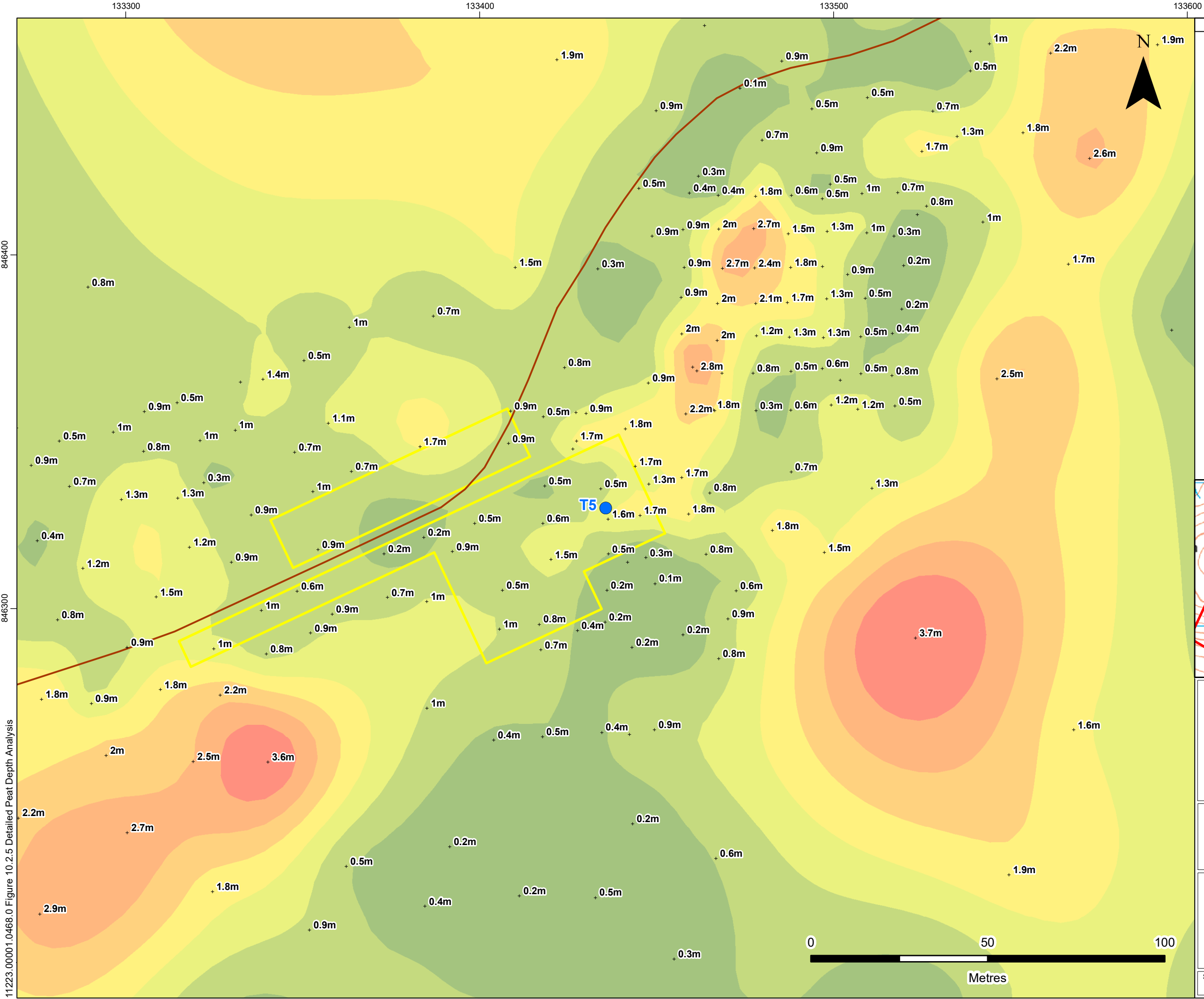
DETAILED PEAT DEPTH ANALYSIS FOR TURBINES

SEI FIGURE 10.2.5c

Scale
1:1,000 @ A3

Date
APRIL 2025

11223.00001.0468.0 Figure 10.2.5 Detailed Peat Depth Analysis

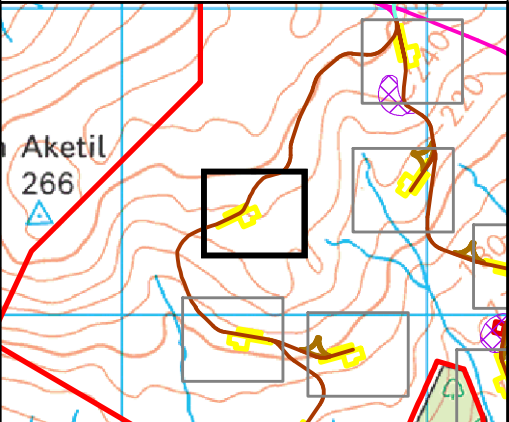


LEGEND

- Application Site Boundary
- Proposed Turbine Location
- Proposed Crane Hardstanding
- Proposed Track Alignment
 - Proposed
- Peat Probe Location

Peat Depth (m)

| |
|---------|
| 0 - 0.5 |
| 0.5 - 1 |
| 1 - 1.5 |
| 1.5 - 2 |
| 2 - 2.5 |
| 2.5 - 3 |
| > 3 |



**BALMEANACH
WIND FARM LIMITED**



BALMEANACH WIND FARM - SEI

TA 10.2 – PMP

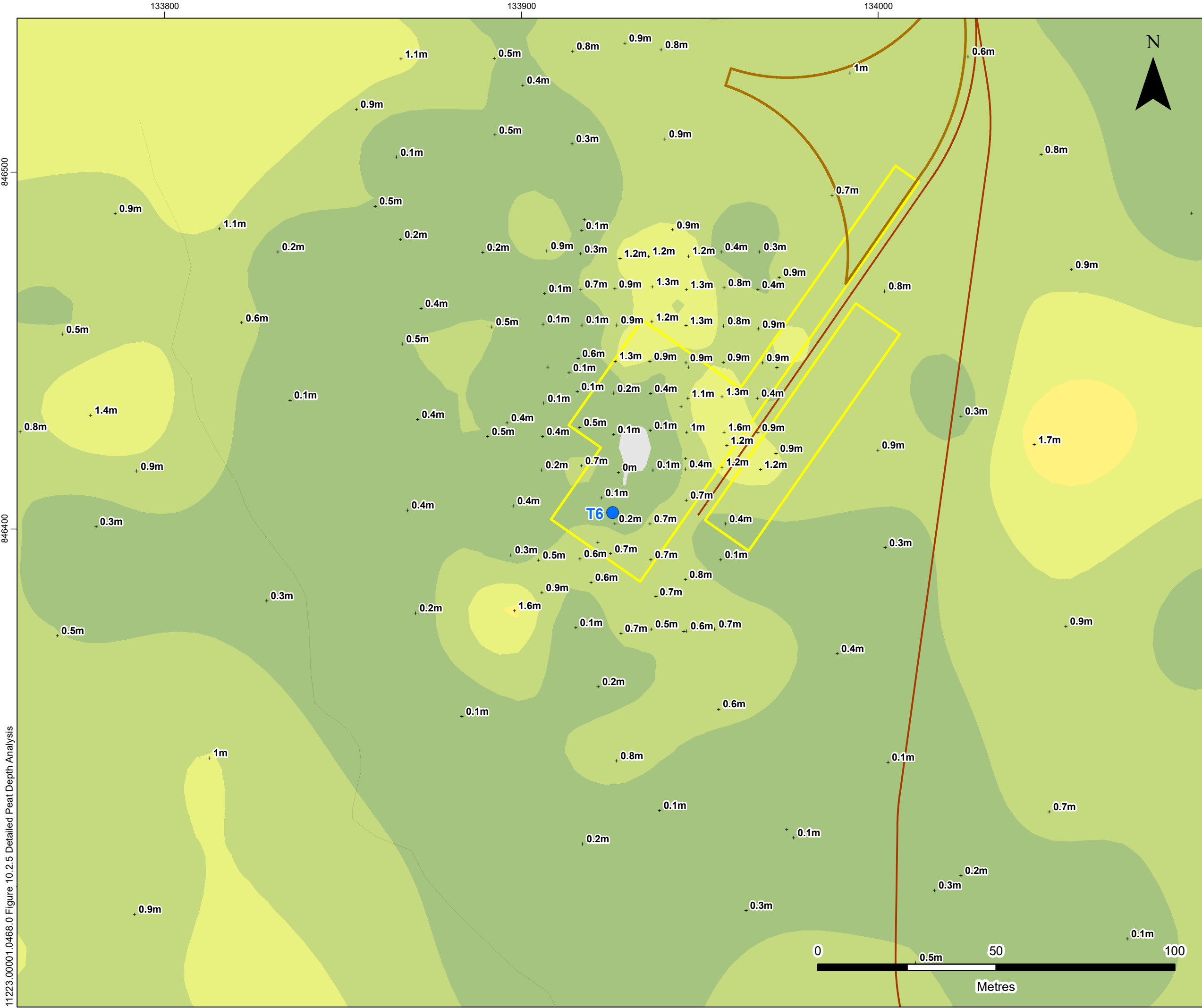
**DETAILED PEAT DEPTH
ANALYSIS FOR TURBINES**

SEI FIGURE 10.2.5d

Scale
1:1,000 @ A3

Date
APRIL 2025

11223.00001.0468.0 Figure 10.2.5 Detailed Peat Depth Analysis



LEGEND

- Application Site Boundary
- Proposed Turbine Location
- Proposed Crane Hardstanding
- Proposed Turning Head
- Proposed Track Alignment**
- Proposed
- Peat Probe Location

Peat Depth (m)

- 0
- 0 - 0.5
- 0.5 - 1
- 1 - 1.5
- 1.5 - 2

**BALMEANACH
WIND FARM LIMITED**

SLR

BALMEANACH WIND FARM - SEI

TA 10.2 – PMP

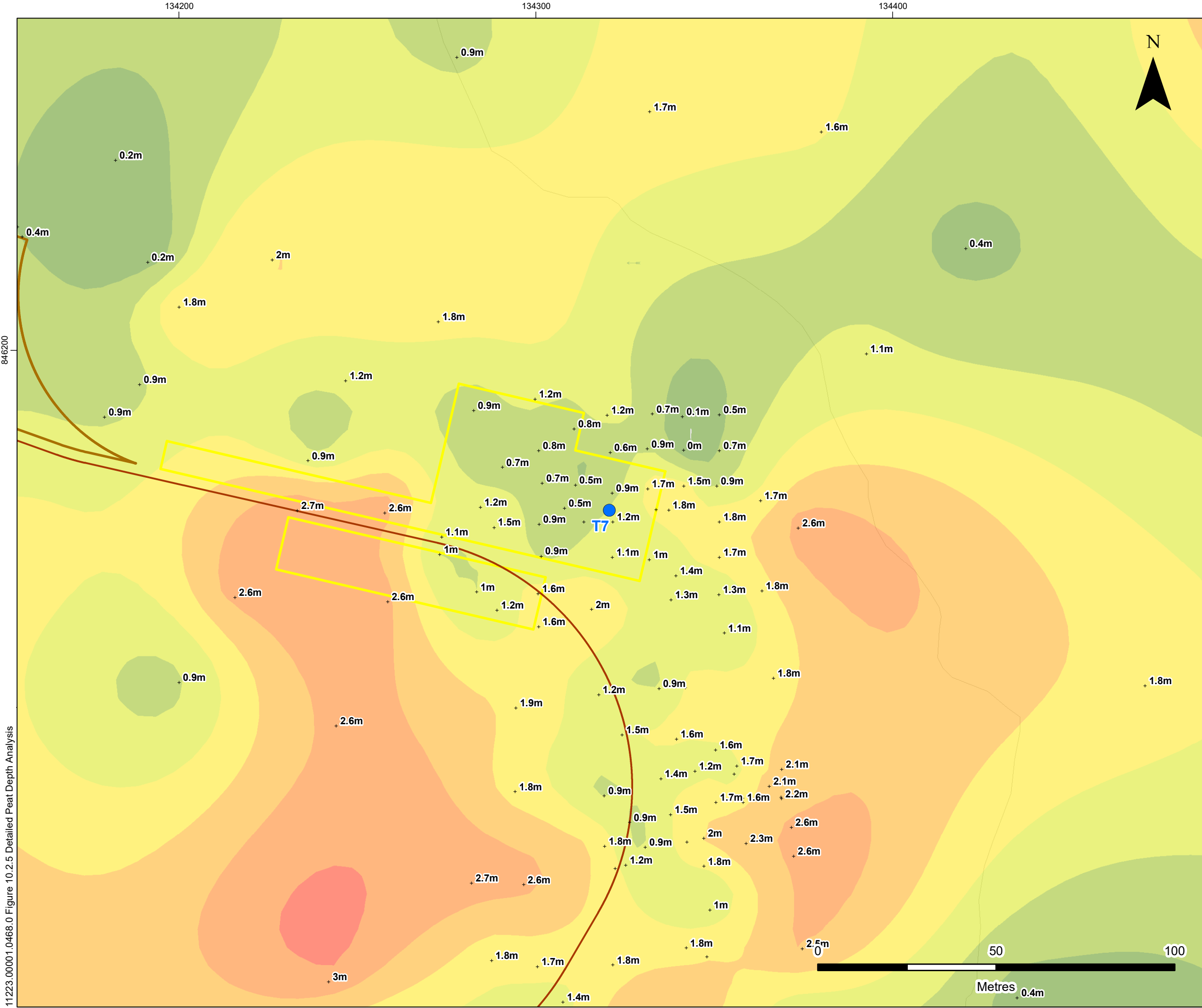
**DETAILED PEAT DEPTH
ANALYSIS FOR TURBINES**

SEI FIGURE 10.2.5e

Scale 1:1,000 @ A3

Date APRIL 2025

11223.00001.0468.0 Figure 10.2.5 Detailed Peat Depth Analysis



LEGEND

Application Site Boundary

Proposed Turbine Location

Proposed Crane Hardstanding

Proposed Turning Head

Proposed Track Alignment

Proposed

+

Peat Probe Location

Peat Depth (m)

0

0 - 0.5

0.5 - 1

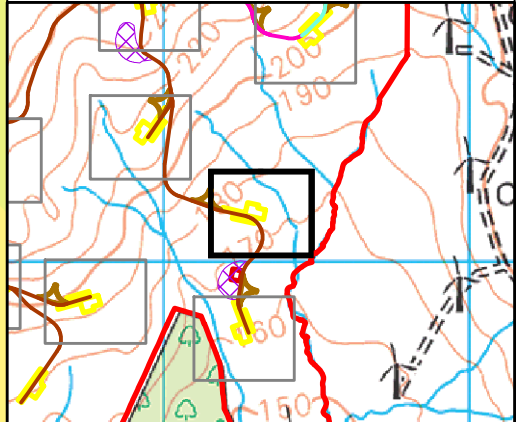
1 - 1.5

1.5 - 2

2 - 2.5

2.5 - 3

> 3



**BALMEANACH
WIND FARM LIMITED**

SLR

BALMEANACH WIND FARM - SEI

TA 10.2 – PMP

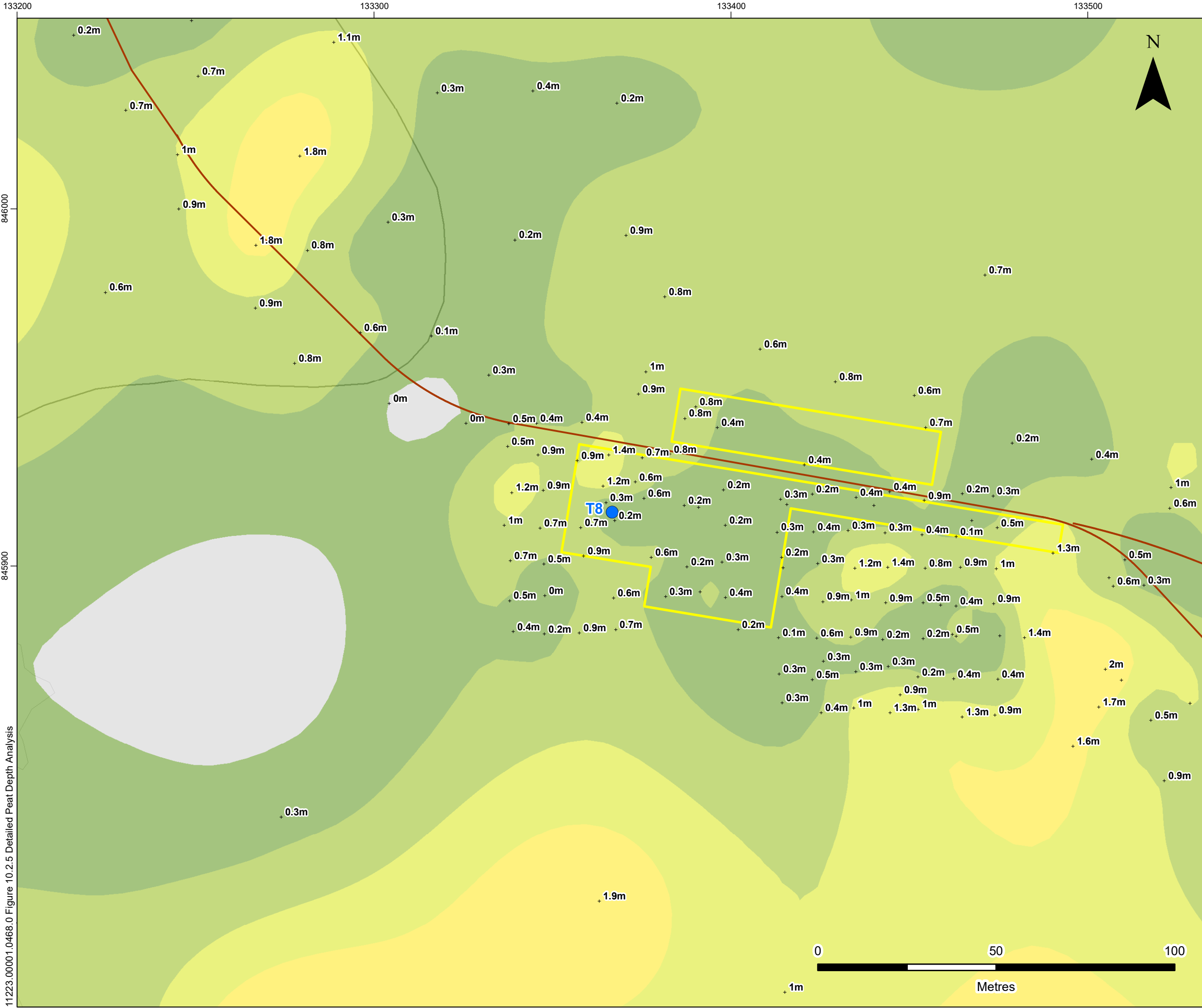
**DETAILED PEAT DEPTH
ANALYSIS FOR TURBINES**

SEI FIGURE 10.2.5f

Scale1:1,000 @ A3

DateAPRIL 2025

11223.00001.0468.0 Figure 10.2.5 Detailed Peat Depth Analysis



LEGEND

- Application Site Boundary
- Proposed Turbine Location
- Proposed Crane Hardstanding
- Proposed Track Alignment**
 - Proposed
- Peat Probe Location

Peat Depth (m)

| |
|---------|
| 0 |
| 0 - 0.5 |
| 0.5 - 1 |
| 1 - 1.5 |
| 1.5 - 2 |

**BALMEANACH
WIND FARM LIMITED**

SLR

BALMEANACH WIND FARM - SEI

TA 10.2 – PMP

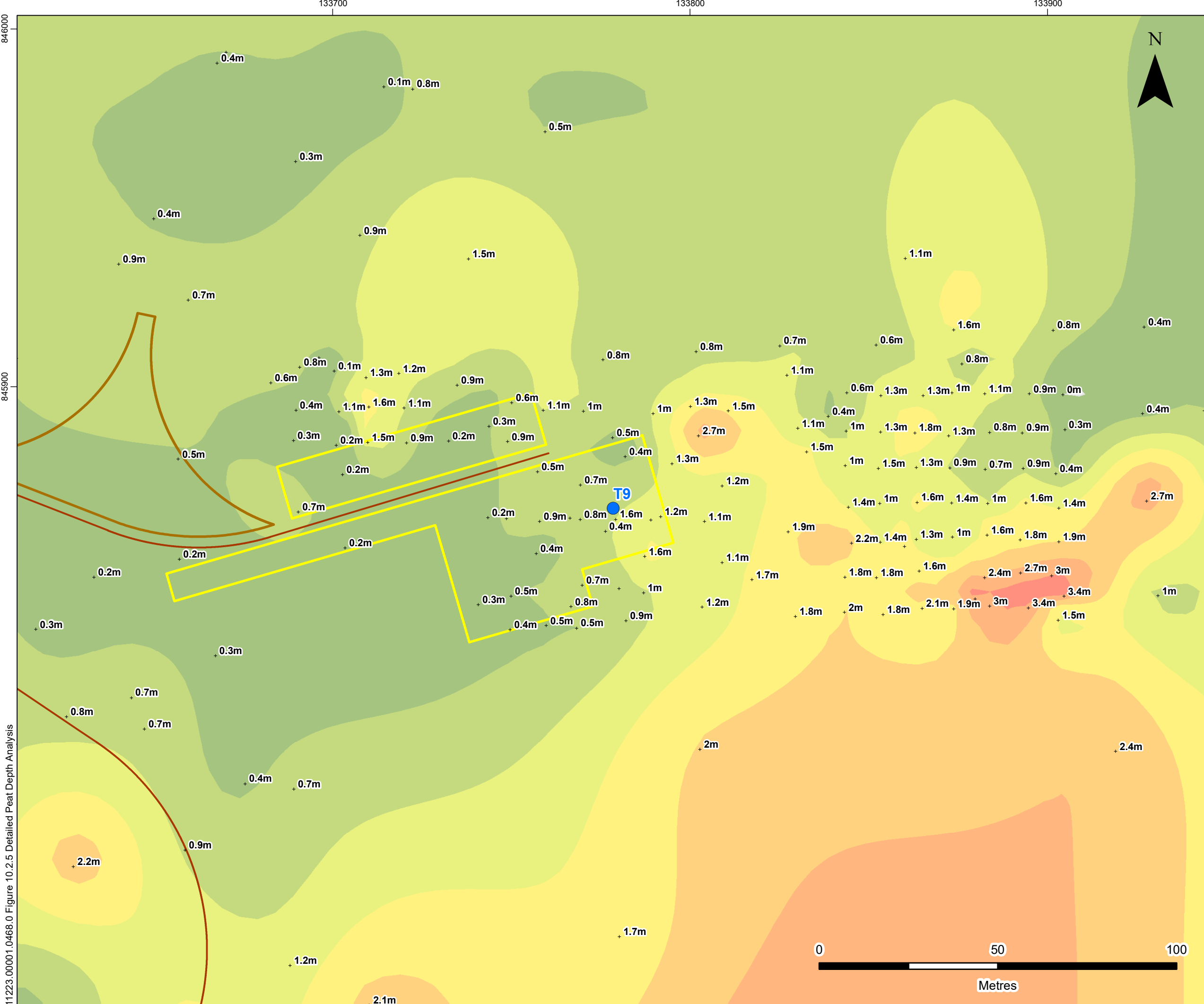
**DETAILED PEAT DEPTH
ANALYSIS FOR TURBINES**

SEI FIGURE 10.2.5g

Scale
1:1,000 @ A3

Date
APRIL 2025

11223.00001.0468.0 Figure 10.2.5 Detailed Peat Depth Analysis

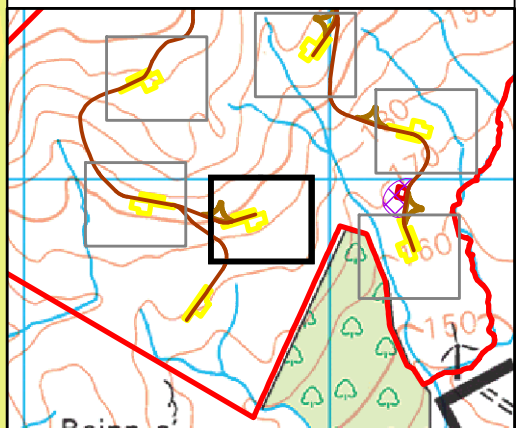


LEGEND

- Application Site Boundary
- Proposed Turbine Location
- Proposed Crane Hardstanding
- Proposed Turning Head
- Proposed Track Alignment**
- Proposed
- Peat Probe Location

Peat Depth (m)

- 0
- 0 - 0.5
- 0.5 - 1
- 1 - 1.5
- 1.5 - 2
- 2 - 2.5
- 2.5 - 3
- > 3



**BALMEANACH
WIND FARM LIMITED**

SLR

BALMEANACH WIND FARM - SEI
TA 10.2 – PMP

**DETAILED PEAT DEPTH
ANALYSIS FOR TURBINES**

SEI FIGURE 10.2.5h

Scale: 1:1,000 @ A3 Date: APRIL 2025

11223.00001.0468.0 Figure 10.2.5 Detailed Peat Depth Analysis

134100

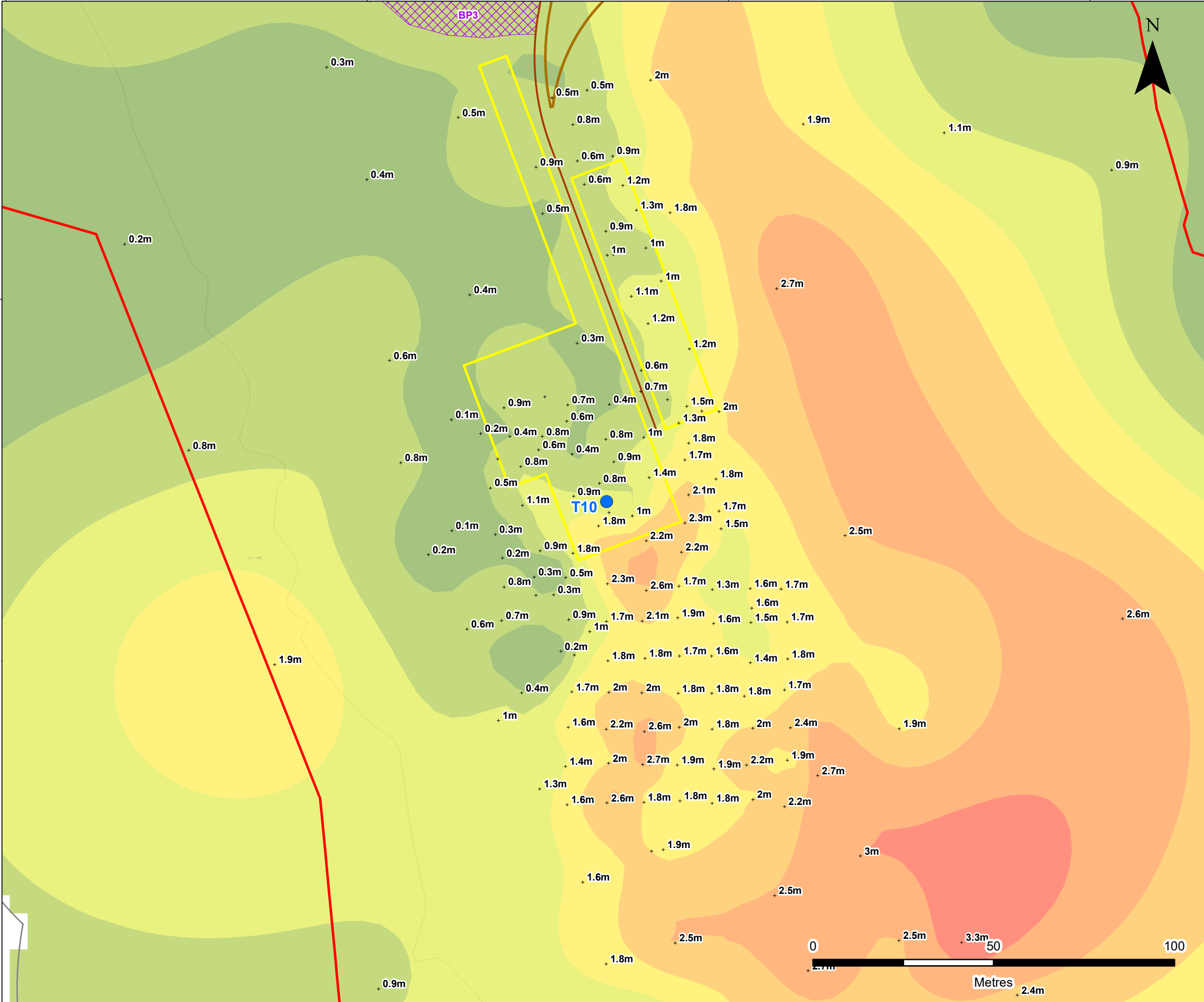
134200

134300

134400

845800

11223.00001.0468.0 Figure 10.2.5 Detailed Peat Depth Analysis



LEGEND

- Application Site Boundary
- Proposed Turbine Location
- Proposed Crane Hardstanding
- Proposed Turning Head
- Potential Borrow Pit
- Proposed Track Alignment
 - Proposed
- Peat Probe Location

Peat Depth (m)

| |
|---------|
| 0 - 0.5 |
| 0.5 - 1 |
| 1 - 1.5 |
| 1.5 - 2 |
| 2 - 2.5 |
| 2.5 - 3 |
| > 3 |

BALMEANACH WIND FARM LIMITED

SLR

BALMEANACH WIND FARM - SEI

TA 10.2 – PMP

DETAILED PEAT DEPTH ANALYSIS FOR TURBINES

SEI FIGURE 10.2.5i

Scale 1:1,000 @ A3

Date APRIL 2025