

LEGEND

- Application Site Boundary
- Proposed Turbine Location
- Viewpoint
- National Scenic Area
- Wild Land
- Garden and Designed Landscape
- Special Landscape Area

**View Arcs used for Viewpoint Visualisations**

- Panorama / Cumulative Wireline / Photomontage (65.5°)
- Single Frame Photomontage (39.6°)
- 27° Photomontage

**BALMEANACH WIND FARM LIMITED**

BALMEANACH WIND FARM - SEI  
LANDSCAPE AND VISUAL IMPACT

**VIEWPOINT LOCATION**  
VP15 THE STORR

**SEI FIGURE 7.50**

Scale  
1:25,000 @ A3

Date  
APRIL 2025

11223.00001.0402.0 VP Location Plan THC





© Crown copyright. All rights reserved (2023). Licence number 0100031673

Photomontage

**Viewpoint 15: The Storr**

Distance to nearest turbine: 16.39km      Camera: Nikon Z 6II      Focal length: 50mm vertical (27°) x 28mm horizontal (65.5°)      Camera height: 1.5m      Date: 02/10/2019      Time: 11:25

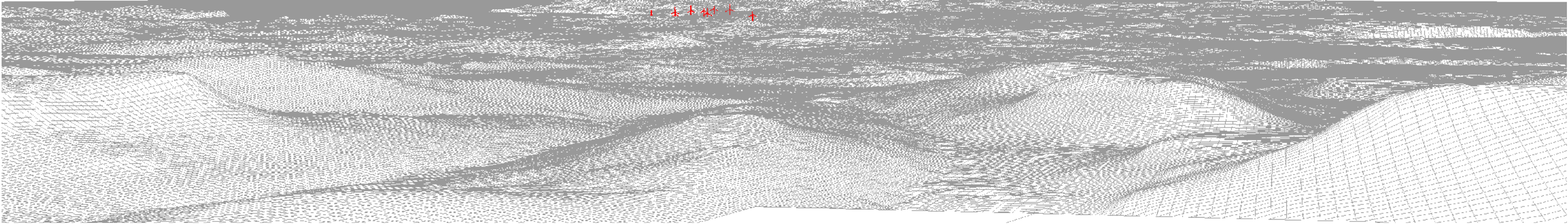




Viewpoint 15: Existing view

Viewpoint 15: Wireline overlay

10 9 7 8 6 4 5 3 2







Viewpoint 15: Existing view

Viewpoint 15: Cumulative Wireline: Operational and Consented. Balmeanach turbines in red, operational in black and consented in green.

h

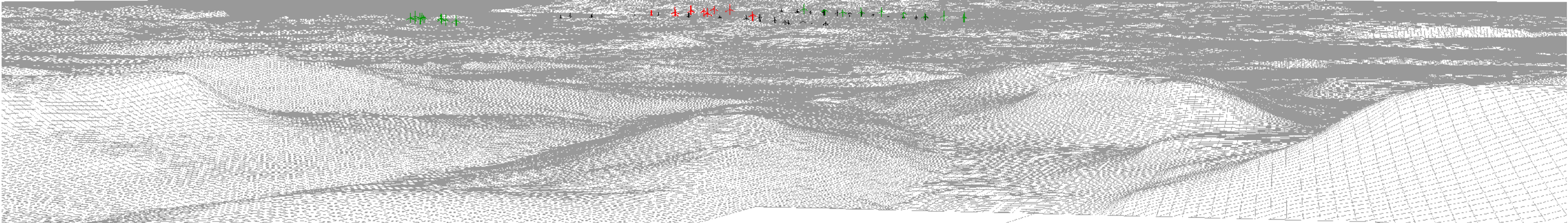
Glen Ullinish

Balmeanach

Ben Sca and Extension

Ben Aketil and Extension

Edinbane



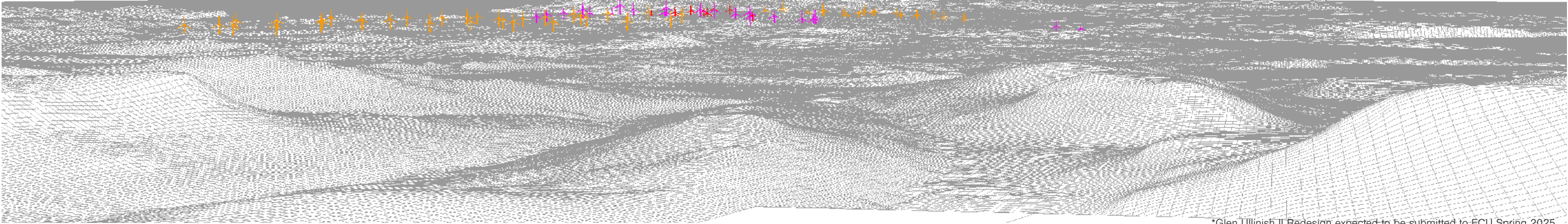
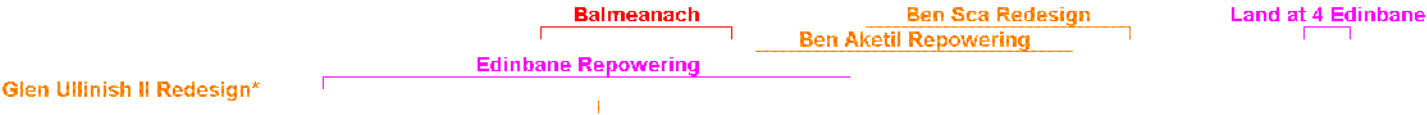




Viewpoint 15: Existing view

Viewpoint 15: Cumulative Wireline: Proposed. Balmeanach turbines in red, In Planning in orange and scoping in pink.

1 Redesign







**Viewpoint 15: The Storr**

Distance to nearest turbine: 16.39km    Camera: Nikon Z 6II    Focal length: 50mm    Camera height: 1.5m    Date: 02/10/2019    Time: 11:25

When viewed at a comfortable arm's length (approx. 500mm), this printed image is representative of our detailed central vision, but is not representative of scale and distance.





© Crown copyright. All rights reserved (2023). Licence number 0100031673

**Viewpoint 15: The Storr**

Distance to nearest turbine: 16.39km    Camera: Nikon Z 6II    Focal length: 75mm    Camera height: 1.5m    Date: 02/10/2019    Time: 11:25

This image should be viewed at a comfortable arm's length (approx. 500mm).