

LEGEND

Application Site Boundary

Proposed Turbine Location

Viewpoint

National Scenic Area

Wild Land

Garden and Designed Landscape

Special Landscape Area

View Arcs used for Viewpoint Visualisations

Panorama / Cumulative Wireline / Photomontage (65.5°)

Single Frame Photomontage (39.6°)

27° Photomontage

BALMEANACH WIND FARM LIMITED

BALMEANACH WIND FARM - SEI
LANDSCAPE AND VISUAL IMPACT

VIEWPOINT LOCATION
VP1 A863, JUNCTION WITH ROAD TO FEORLIG

SEI FIGURE 7.36

Scale
1:25,000 @ A3

Date
APRIL 2025



© Crown copyright. All rights reserved (2023). Licence number 0100031673

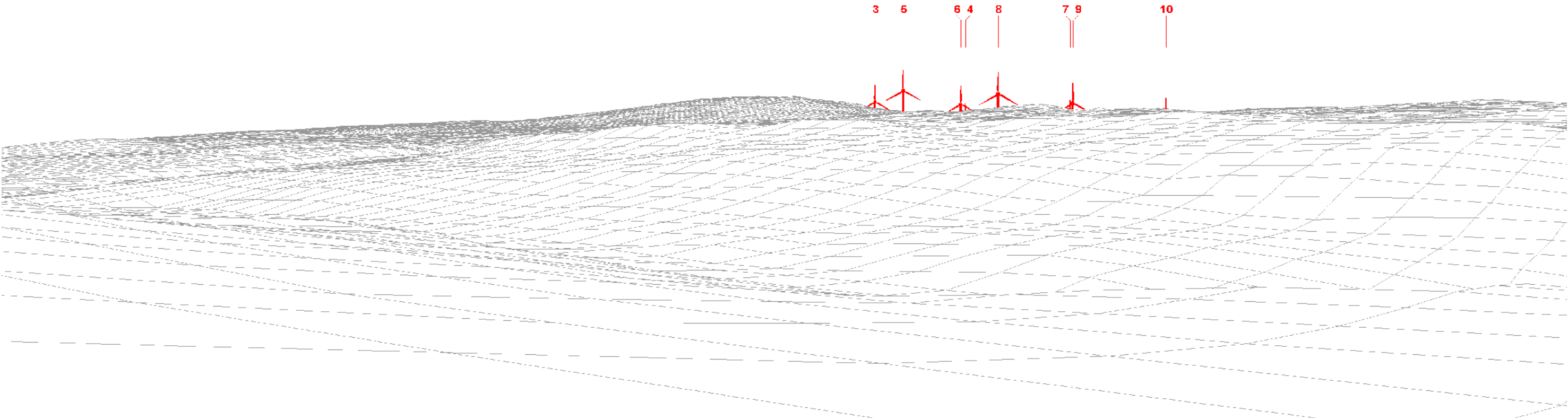
Photomontage

Viewpoint 1: A863, Junction with road to Feorlig Distance to nearest turbine: 3.98km Camera: Nikon Z 6II Focal length: 50mm vertical (27°) x 28mm horizontal (65.5°) Camera height: 1.5m Date: 01/10/2019 Time: 10:29



Viewpoint 1: Existing view

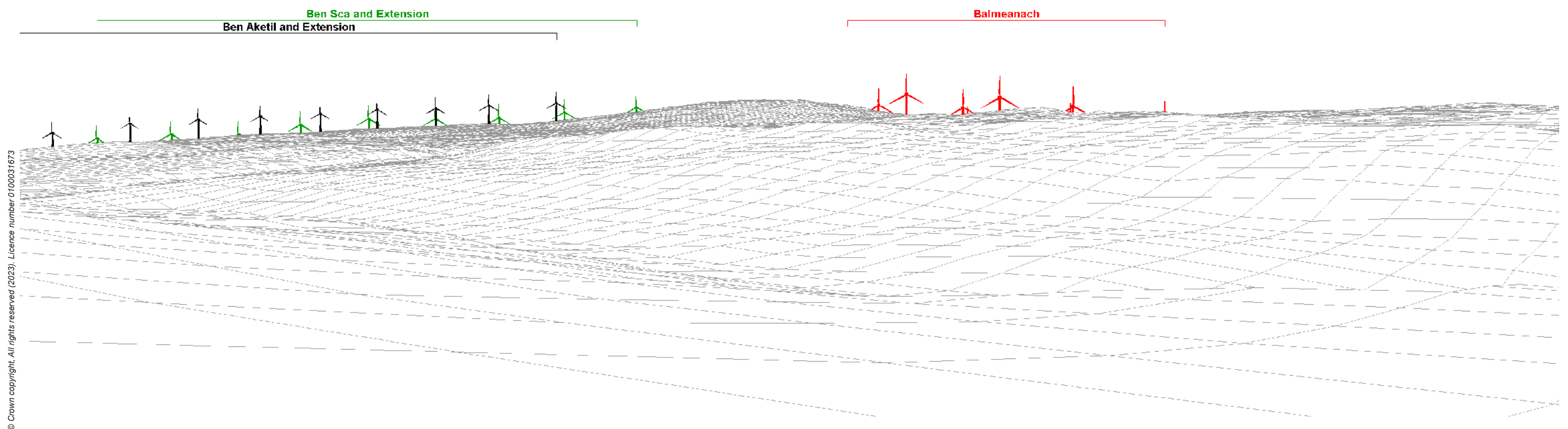
Viewpoint 1: Wireline overlay





Viewpoint 1: Existing view

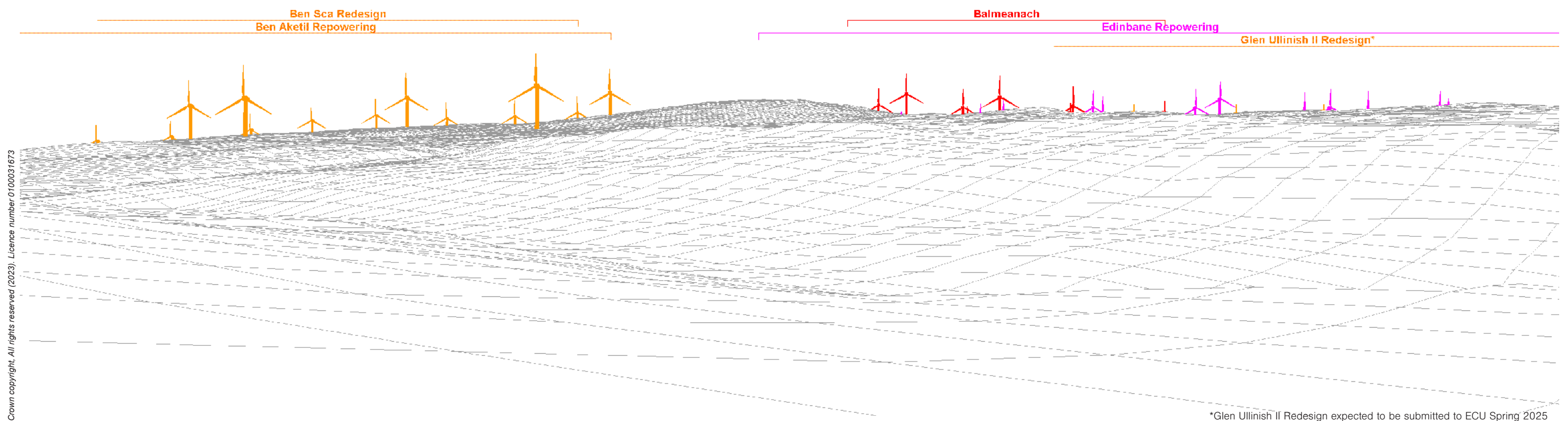
Viewpoint 1: Cumulative Wireline: Operational and Consented. Balmeanach turbines in red, operational in black and consented in green.





Viewpoint 1: Existing view

Viewpoint 1: Cumulative Wireline: Proposed. Balmeanach turbines in red, In Planning in orange and scoping in pink.





Viewpoint 1: A863, Junction with road to Feorlig

Distance to nearest turbine: 3.98km Camera: Nikon Z 6II Focal length: 50mm Camera height: 1.5m Date: 01/10/2019 Time: 10:29

When viewed at a comfortable arm's length (approx. 500mm), this printed image is representative of our detailed central vision, but is not representative of scale and distance.



© Crown copyright. All rights reserved (2023). Licence number 0100031673

Viewpoint 1: A863, Junction with road to Feorlig

Distance to nearest turbine: 3.98km Camera: Nikon Z 6II Focal length: 75mm Camera height: 1.5m Date: 01/10/2019 Time: 10:29

This image should be viewed at a comfortable arm's length (approx. 500mm).