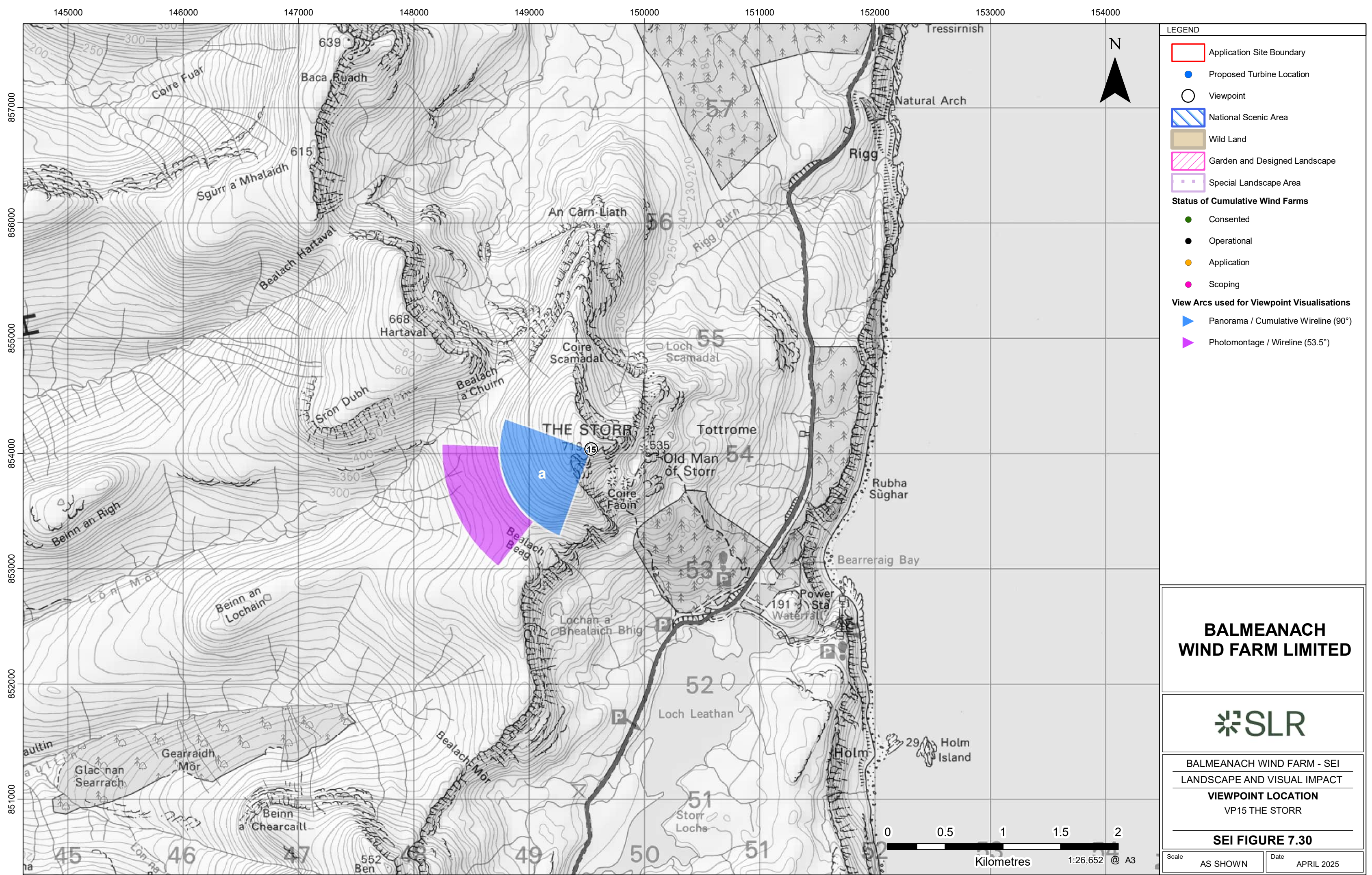


11223.00001.0401.0 VP Location Plan NS



**LEGEND**

- Application Site Boundary
- Proposed Turbine Location
- Viewpoint
- National Scenic Area
- Wild Land
- Garden and Designed Landscape
- Special Landscape Area

**Status of Cumulative Wind Farms**

- Consented
- Operational
- Application
- Scoping

**View Arcs used for Viewpoint Visualisations**

- Panorama / Cumulative Wireline (90°)
- Photomontage / Wireline (53.5°)

**BALMEANACH WIND FARM LIMITED**

**SLR**

BALMEANACH WIND FARM - SEI  
LANDSCAPE AND VISUAL IMPACT  
VIEWPOINT LOCATION  
VP15 THE STORR

**SEI FIGURE 7.30**

Scale AS SHOWN Date APRIL 2025

© This drawing and its content are the copyright of SLR Consulting Ltd and may not be reproduced or amended except by prior written permission. SLR Consulting Ltd accepts no liability for any amendments made by other persons. Contains Ordnance Survey data © Crown copyright and database rights (2021) 0100031673. OS OpenData





Baseline photograph

Extent of 53.5° planar panorama

This image provides landscape and visual context only

Beinn Mheadhionach

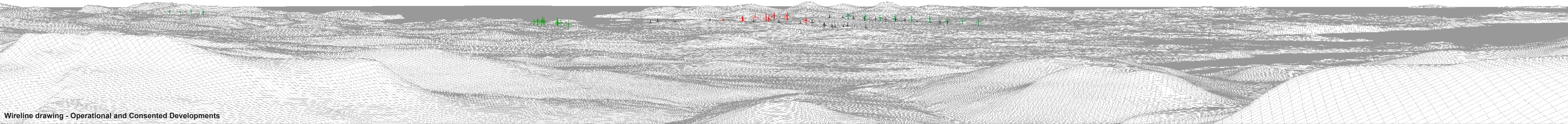
Glen Ullinish

Balmeanach

Ben Sca and Extension

Ben Aketil and Extension

Edinbane



Wireline drawing - Operational and Consented Developments

**OS reference:** 149540 E 854035 N  
**Eye level:** 714.3 mAOD  
**Direction of view:** 245°  
**Nearest turbine:** 16.40 km

**Horizontal field of view:** 90° (cylindrical projection)  
**Principal distance:** 522 mm  
**Paper size:** 841 x 297 mm (half A1)  
**Correct printed image size:** 820 x 130 mm

**Camera:** Nikon Z 6II  
**Lens:** 50mm f/1.4f  
**Camera height:** 1.5 m  
**Date and time:** 02/10/2019 11:25

Legend



Balmeanach



Operational Wind Farm



Consented Wind Farm



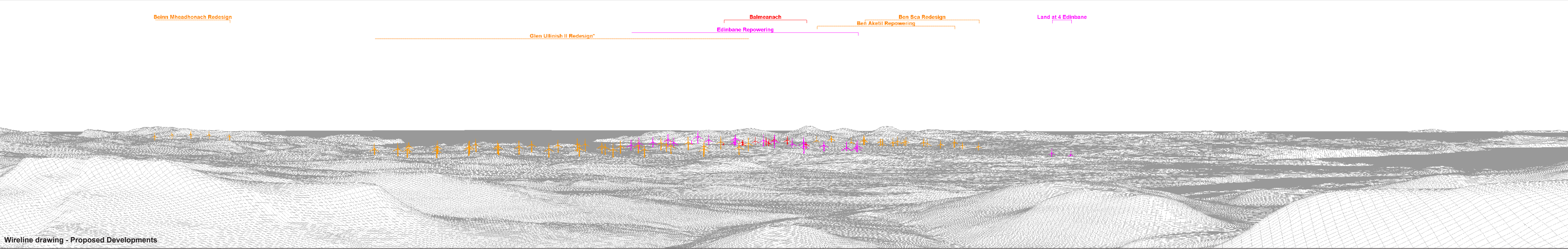
In Planning Wind Farm



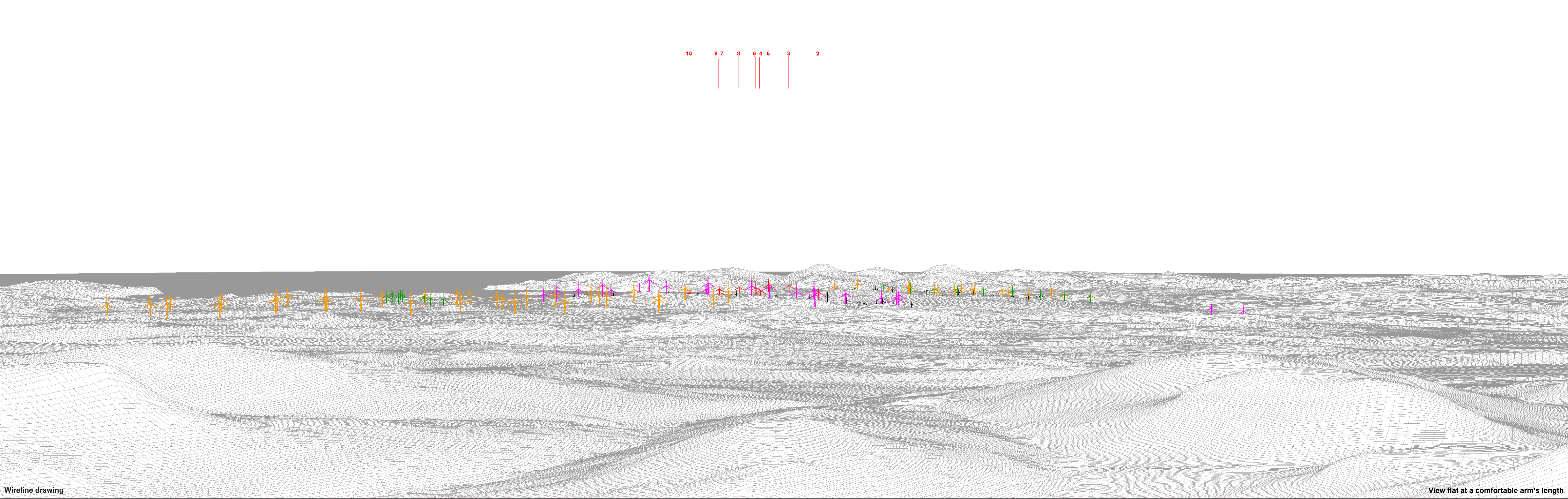
Scoping Wind Farm

\*Glen Ullinish II Redesign expected to be submitted to ECU Spring 2025













Photomontage: Proposed Development

View flat at a comfortable arm's length

<b>OS reference:</b>	149540 E 854035 N	<b>Horizontal field of view:</b>	53.5° (planar projection)	<b>Camera:</b>	Nikon Z 6II
<b>Eye level:</b>	714.3 mAOD	<b>Principal distance:</b>	812.5 mm	<b>Lens:</b>	50mm f/1.4f
<b>Direction of view:</b>	245°	<b>Paper size:</b>	841 x 297 mm (half A1)	<b>Camera height:</b>	1.5 m
<b>Nearest turbine:</b>	16.40 km	<b>Correct printed image size:</b>	820 x 260 mm	<b>Date and time:</b>	02/10/2019 11:25

Figure 7.30c  
Viewpoint 15: The Storr  
Balmeanach Wind Farm SEI  
© Crown copyright. All rights reserved (2023). Licence number 0100031673



