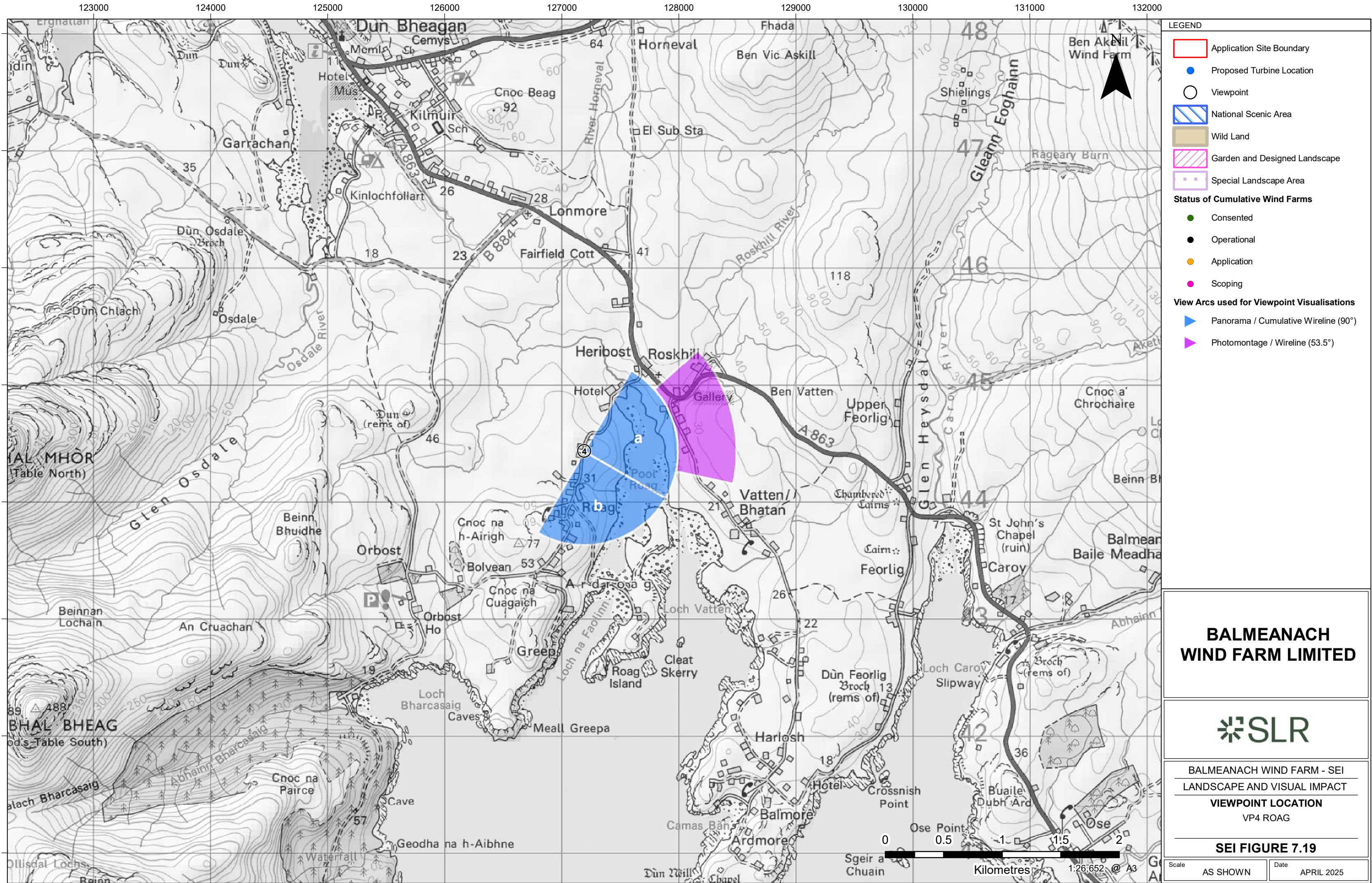


11223.00001.0401.0 VP Location Plan NS



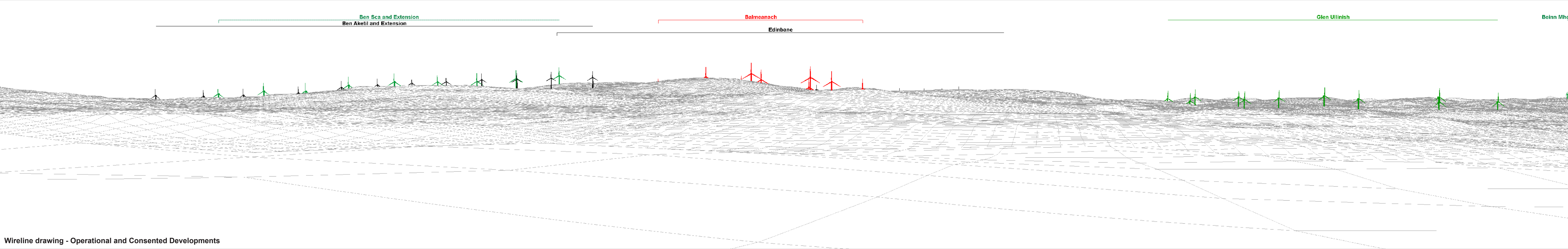




Baseline photograph

Extent of 53.5° planar panorama

This image provides landscape and visual context only



Wireline drawing - Operational and Consented Developments

**OS reference:** 127193 E 844432 N  
**Eye level:** 34.6 mAOD  
**Direction of view:** 75°  
**Nearest turbine:** 6.35 km

**Horizontal field of view:** 90° (cylindrical projection)  
**Principal distance:** 522 mm  
**Paper size:** 841 x 297 mm (half A1)  
**Correct printed image size:** 820 x 130 mm

**Camera:** Nikon Z 6II  
**Lens:** 50mm f/1.4f  
**Camera height:** 1.5 m  
**Date and time:** 02/10/2019 13:42



\*Glen Ullinish II Redesign expected to be submitted to ECU Spring 2025

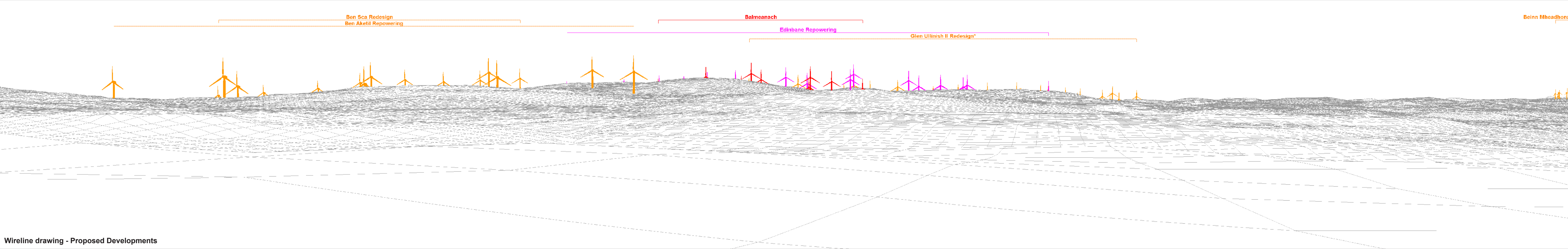




Baseline photograph

Extent of 53.5° planar panorama

This image provides landscape and visual context only



Wireline drawing - Proposed Developments

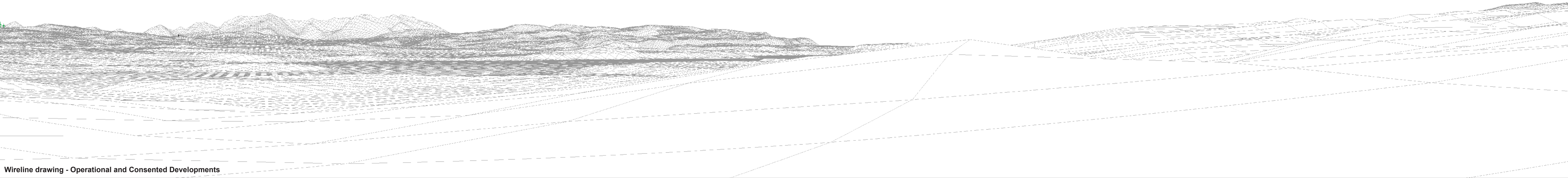




Baseline photograph

This image provides landscape and visual context only

eadhonach Sumardale Croft Meadle Farm

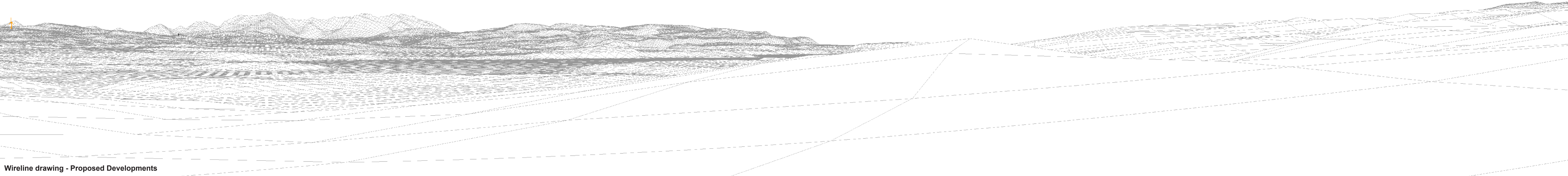


Wireline drawing - Operational and Consented Developments

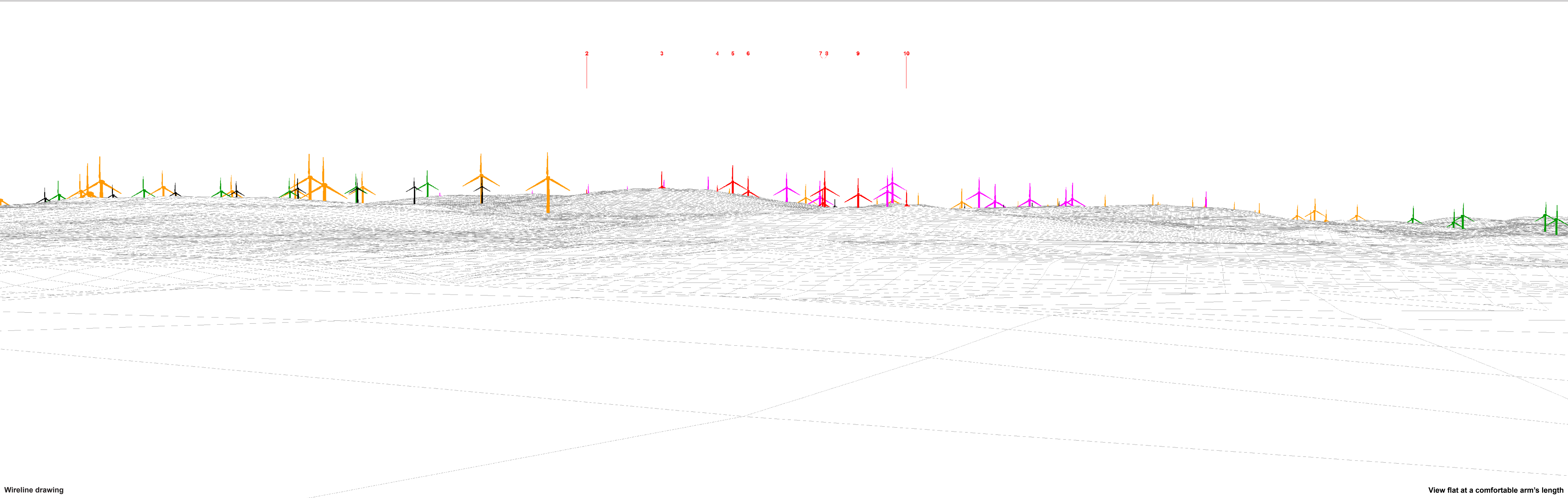




honaach Redesign      Sumardale Croft      Meadle Farm











Photomontage: Proposed Development

View flat at a comfortable arm's length

<b>OS reference:</b>	127193 E 844432 N	<b>Horizontal field of view:</b>	53.5° (planar projection)	<b>Camera:</b>	Nikon Z 6II	<b>Figure 7.19d</b>
<b>Eye level:</b>	34.6 mAOD	<b>Principal distance:</b>	812.5 mm	<b>Lens:</b>	50mm f/1.4f	<b>Viewpoint 4: Roag</b>
<b>Direction of view:</b>	75°	<b>Paper size:</b>	841 x 297 mm (half A1)	<b>Camera height:</b>	1.5 m	<b>Balmeanach Wind Farm SEI</b>
<b>Nearest turbine:</b>	6.35 km	<b>Correct printed image size:</b>	820 x 260 mm	<b>Date and time:</b>	02/10/2019 13:42	<small>© Crown copyright. All rights reserved (2023). Licence number 0100031673</small>



