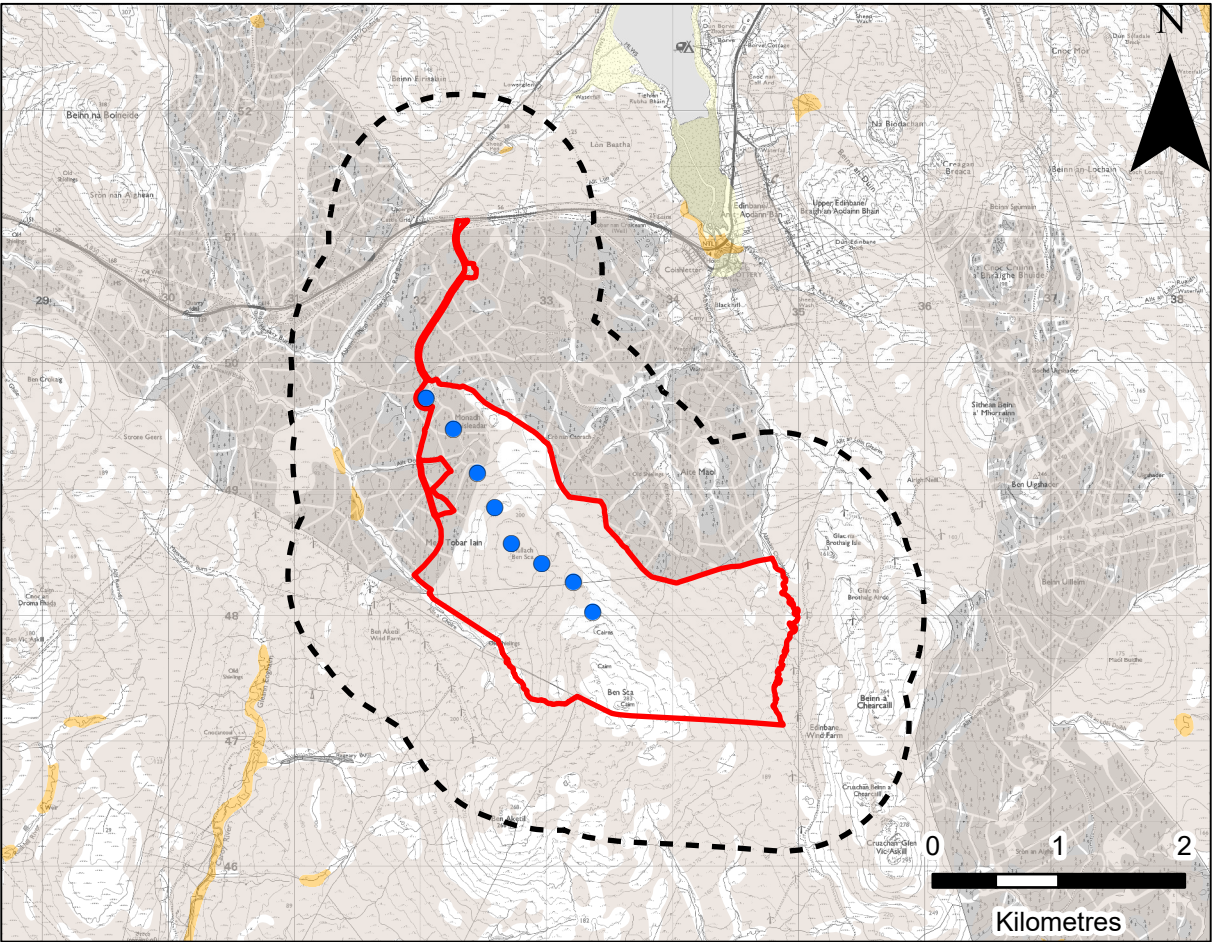


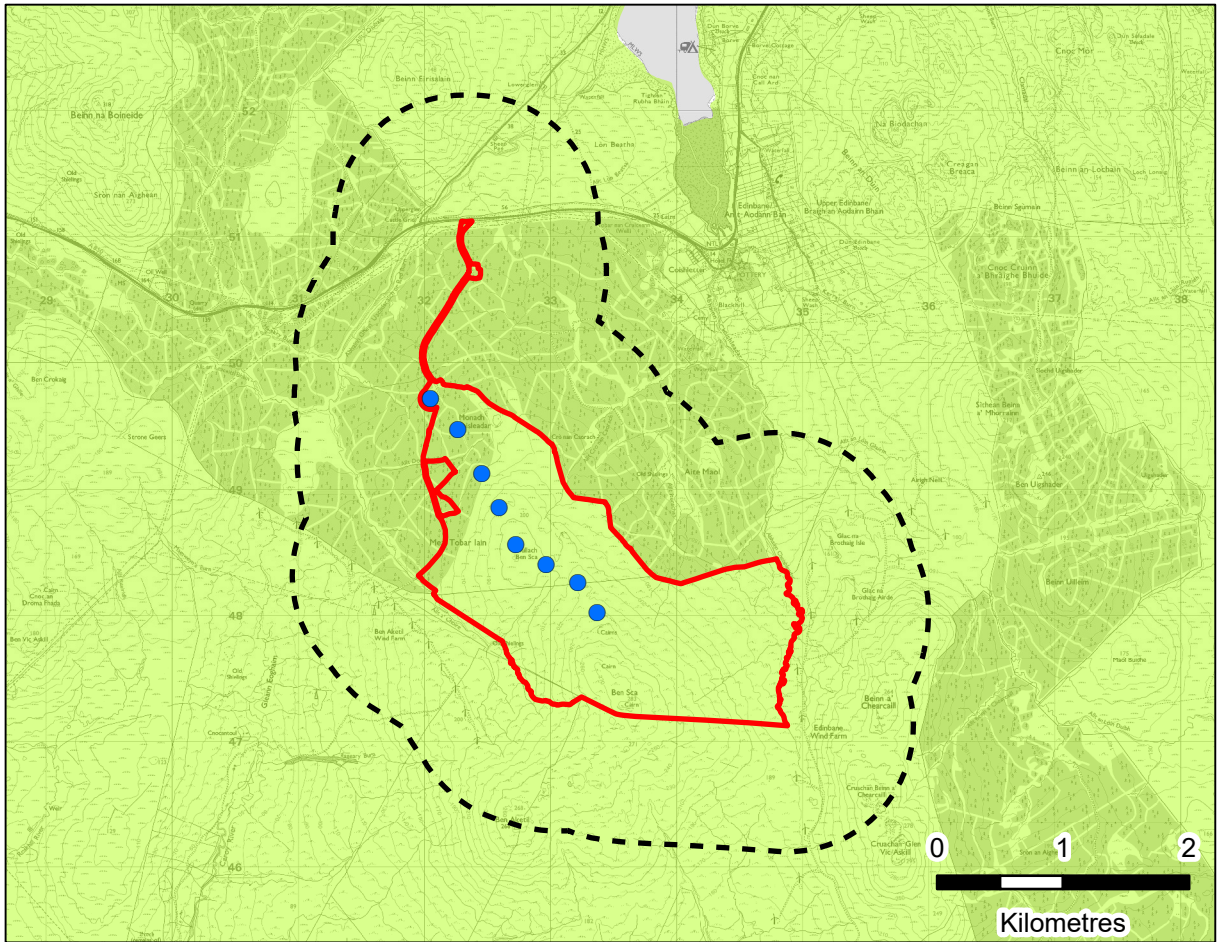
MAP EXTENT

Scale: 1:200,000 @A3



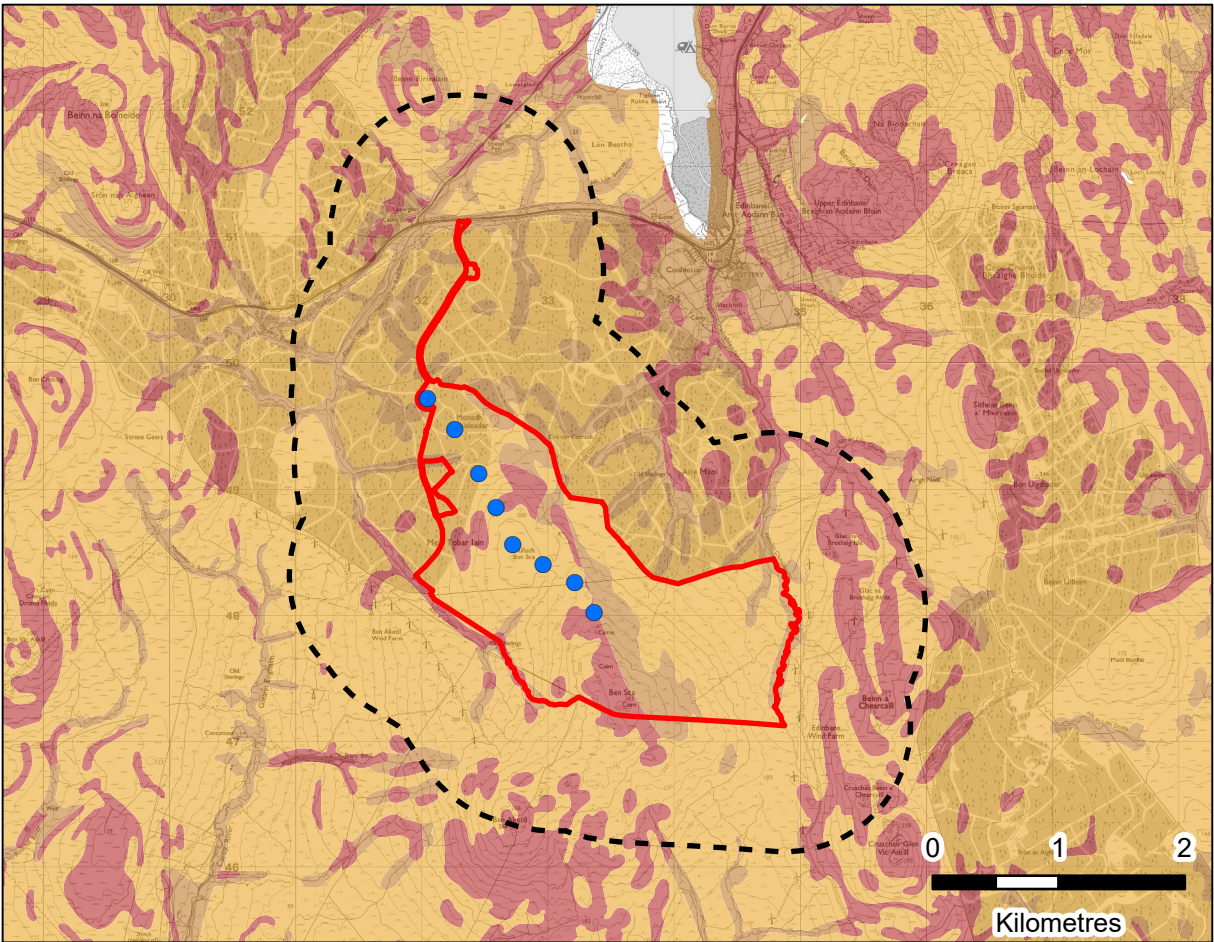
SUPERFICIAL AQUIFERS

Scale: 1:60,000 @A3



BEDROCK AQUIFERS

Scale: 1:60,000 @A3



GROUNDWATER VULNERABILITY

Scale: 1:60,000 @A3

LEGEND

- Application Boundary
- Application Boundary 1 km Buffer
- Proposed Turbine Location

Superficial Aquifer

- Intergranular Flow; Moderate to High Productivity
- Intergranular Flow; Low to Moderate Productivity
- Not a significant aquifer

Bedrock Aquifer

- Fracture Flow; Low Productivity

Groundwater Vulnerability in the Uppermost Aquifer Vulnerability Class

- 5 (Vulnerable to Most Pollutants, with Rapid Impact in Many Scenarios)
- 4a (Vulnerable to Pollutants Not Readily Absorbed/Transformed. Less Likely to have Clay Present in Superficial Deposits)
- 4b (Vulnerable to Pollutants Not Readily Absorbed/Transformed. More Likely to have Clay Present in Superficial Deposits)
- 3 (Vulnerable to Some Pollutants; Many Others Significantly Attenuated)

BEN SCA WIND FARM LTD

SLR

BEN SCA REDESIGN WIND FARM - SEI

HYDROLOGY, HYDROGEOLOGY AND SOILS

GROUNDWATER VULNERABILITY

SEI FIGURE 6.7

Scale1:200,000 @ A3

DateAPRIL 2025