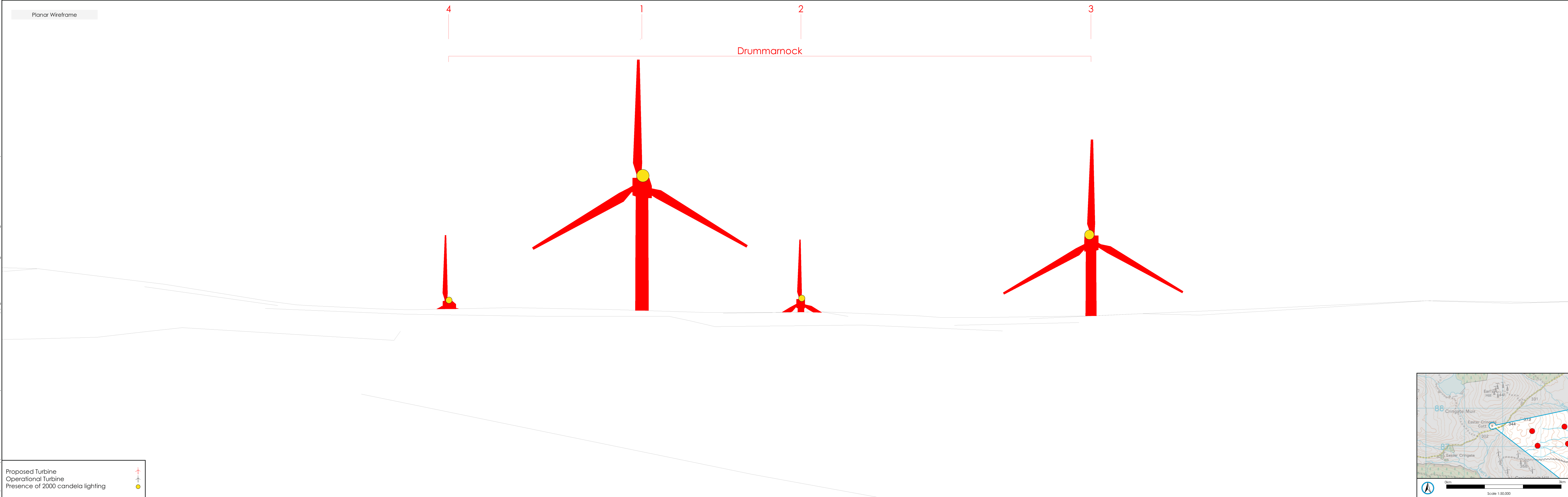


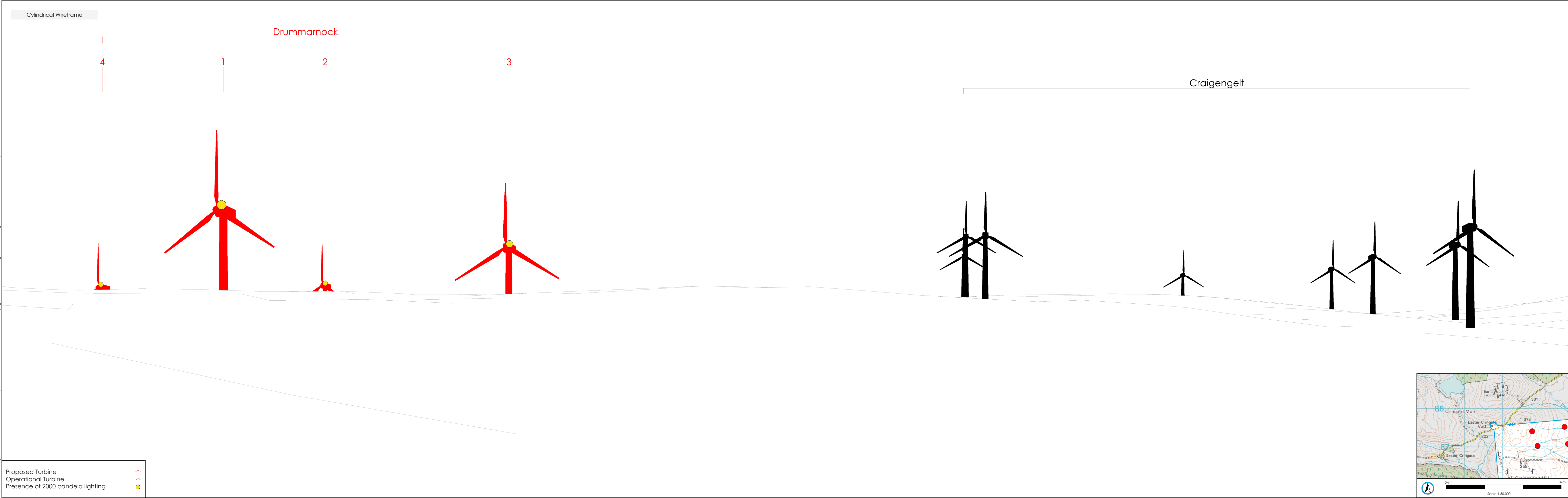
Reproduced by permission of Ordnance Survey on behalf of HMSO. © Crown Copyright and database right 2023. All rights reserved. Ordnance Survey Licence No AL100031673



Drummarnock Wind Farm	Figure A5-1-2b	RA1 - Easter Cringate Cottage	Grid Reference E271748, N687542 Elevation 320m AOD Height Above Ground 1.5m	Proposed Turbine Hubs Visible 4 Proposed Turbine Tips Visible 4 Nearest Proposed Turbine 1.03km	Proposed Turbine Tip Height 180m Proposed Turbine Hub Height 98.5m Proposed Turbine Diameter 163m	Horizontal Field of View - 53.5° Vertical Field of View - 18.2°	Planar Projection	Principal distance of the image - 81 cm	Paper Size - 84.1 x 29.7 cm (A1 width)	View flat at a comfortable arm's length. If viewing this image on a screen, enlarge to full screen height	Image Size - 82.0 x 26.0 cm	wind2atmos	Drawn by JT Checked by TH Approved by LK	TL026 08/11/2023 40419_WF_C001a
-----------------------	----------------	-------------------------------	--	--	--	--	-------------------	---	--	---	-----------------------------	------------	--	---------------------------------------

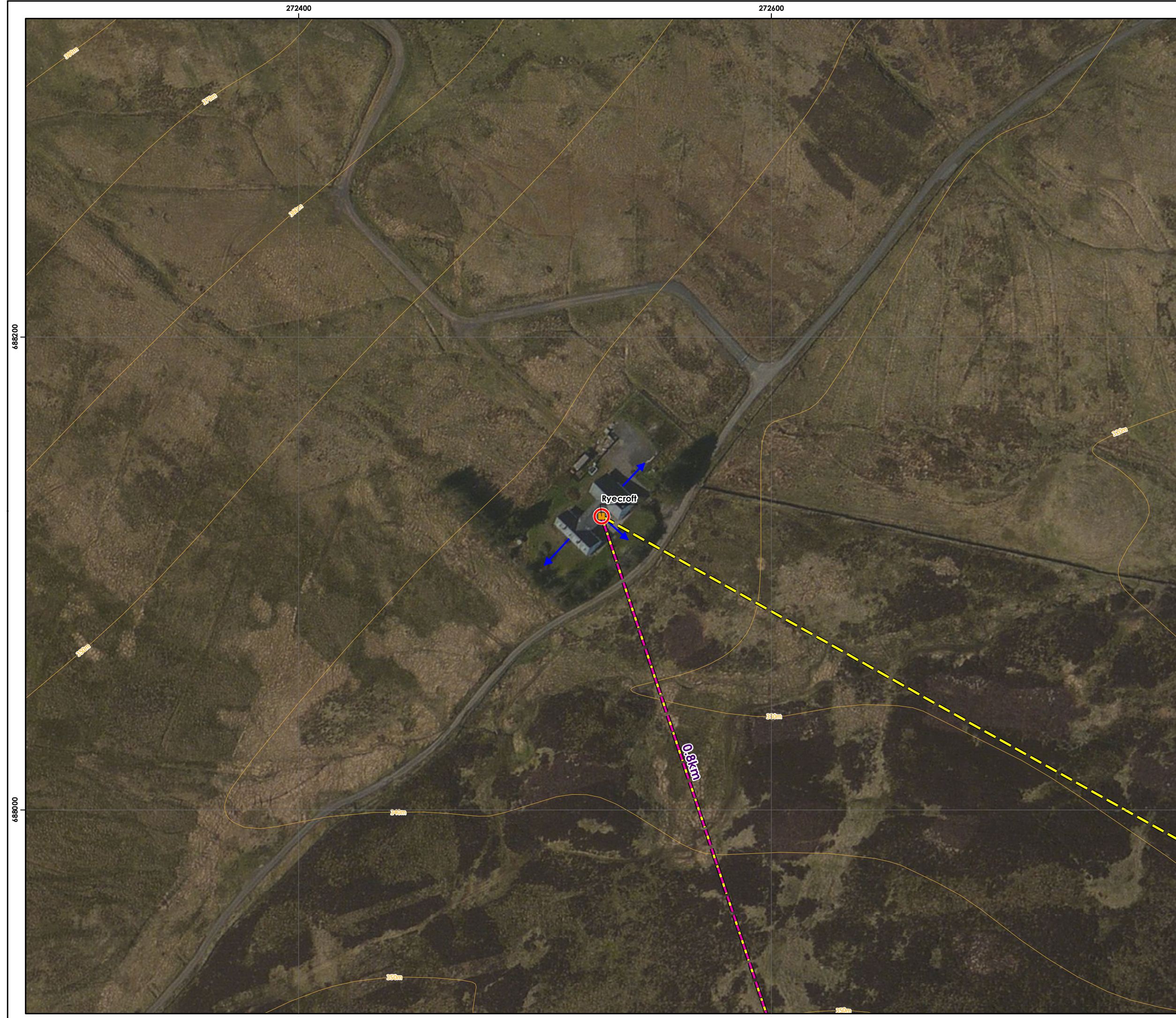
Curvature of the Earth has been allowed for. This image can only be accurately assessed from the correct Viewing Distance. Wireframe generated using Ordnance Survey's Terrain 5 Dataset which does not take in to account the screening effects of buildings or vegetation.

Reproduced by permission of Ordnance Survey on behalf of HMSO. © Crown Copyright and database right 2023. All rights reserved. Ordnance Survey Licence No AL100031673



Drummarnock Wind Farm	Figure A5-1-2c	RA1 - Easter Cringate Cottage	Grid Reference Elevation Height Above Ground	E271748, N687542 320m AOD 1.5m	Proposed Turbine Hubs Visible Proposed Turbine Tips Visible Nearest Proposed Turbine	4 4 1.03km	Proposed Turbine Tip Height Proposed Turbine Hub Height Proposed Turbine Diameter	180m 98.5m 163m	Horizontal Field of View - 90° Vertical Field of View - 14.2°	Cylindrical Projection	Principal distance of the image - 52 cm	Paper Size - 84,1 x 29,7 cm (A1 width)	View flat at a comfortable arm's length. If viewing this image on a screen, enlarge to full screen height	Image Size - 82.0 x 26.0 cm	wind2atmos	Drawn by JT Checked by TH Approved by LK	TL026 08/11/2023 40419_WF_C001a
-----------------------	----------------	-------------------------------	--	--------------------------------------	--	------------------	---	-----------------------	--	------------------------	---	--	---	-----------------------------	------------	--	---------------------------------------

Curvature of the Earth has been allowed for. This image can only be accurately assessed from the correct Viewing Distance. Wireframe generated using Ordnance Survey's Terrain 5 Dataset which does not take in to account the screening effects of buildings or vegetation.

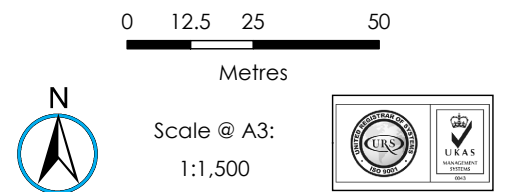
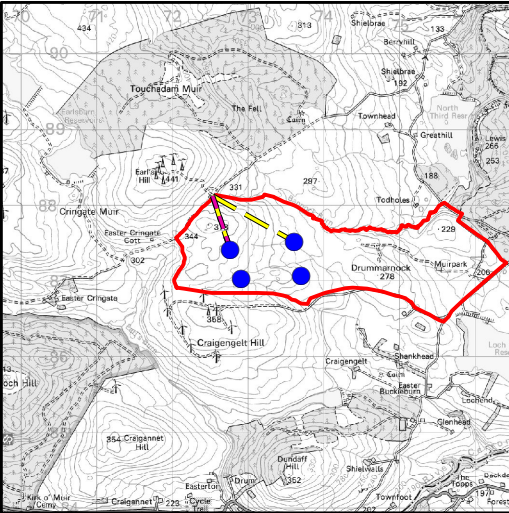


Drummarnock Wind Farm



Figure A5-1-3a
Residential Amenity Figure RA2
Ryecroft

- Key**
- Wireline location
 - Residential property
 - Angle of view to outer extents of visible turbines
 - Nearest turbine
 - Principle property orientation



Portions of this document include intellectual property of
Esri and its licensors and are used herein under license.
Copyright © 2023 Esri and its licensors. All rights reserved.