



Table A5-2-5: Craigengelt

| | | | |
|--|---------------------------------|---|---|
| Name: Craigengelt (Note: this property is financially involved in Craigengelt Wind Farm) | | | |
| Direction to Site | North-west | Number of turbine hubs visible | 4 |
| Distance to nearest turbine | 1.4km (from closer Craigengelt) | Number of turbine blades visible | 4 |
| Nearest turbine | T2 | | |
| Description of property, location and existing context: | | | |
| <p>Craigengelt is a period farmhouse which is accessed via a private track (over 1km in length), to the south-east. The property is set on the open lower eastern flank of Craigengelt Hill, sitting lower than the site at approximately 233m AOD. There is garden area to the rear (north) and large out-buildings to the east and west of the property.</p> <p>Craigengelt Bungalow is a more modern one storey property located further south-east, on access track to Craigengelt. It has an open garden to the rear (north) of the property.</p> | | | |
| Photograph: | | | |
|  | |  | |
| View looking north-west towards south-eastern facing principal frontage of Craigengelt. Craigengelt Wind Farm visible on horizon beyond. | | View looking north-west towards south-eastern facing principal frontage of Craigengelt Bungalow. Craigengelt Wind Farm visible on horizon beyond. | |
| Description of existing views and visual amenity: | | | |
| <p>The primary and open outlook from both properties is orientated to the south-east, looking over the valley of small tributaries which feed south into the River Carron. Secondary views, from the north-western façades of both properties look over rear garden areas towards the eastern flank of Craigengelt Hill beyond. Turbines in Craigengelt Wind Farm are visible above the horizon, at a distance of approximately 1.7km from Craigengelt, and 2.4km from Craigengelt Bungalow.</p> | | | |
| Description of likely change in views and visual amenity as a result of the Proposed Development: | | | |
| Refer to Figure A5-1-8 and A5-1-11 | | | |
| <p>The hubs and blades of up to four turbines will be visible, at a distance of 1.4km from Craigengelt and 2km from Craigengelt Bungalow. Secondary views from rear façade and garden area, and views on approach to the property, will be available. The Proposed Development will be seen alongside turbines in the operational Craigengelt Wind Farm.</p> <p>During hours of darkness permanent aviation safety lighting on all four hubs will also be visible. Due to the viewing angle the intensity of this lighting will be below 200 candela (or below 20 candela in clear weather conditions, when the lights are dimmed to 10%). Refer to Figure A5-3-1. Night time effects relating to visibility of four aviation lights are not judged to breach the RVA threshold. The following conclusions relate to day time effects.</p> | | | |
| Conclusion with respect to the potential effects on Living Conditions: | | | |
| <p>The magnitude of visual change from this property is judged to be high. 4 turbines and hubs will be visible in secondary views from the rear façade and garden area, and in views on approach to both properties. Primary views from both properties to the south-east, will not be altered. The Proposed Development will be seen in the context of horizons which have been altered by wind turbines, alongside turbines in the operational Craigengelt Wind Farm. Due to viewing distance and in this context, the Proposed Development will not appear overwhelming or oppressive.</p> <p>It is not considered that the Proposed Development will breach the residential visual amenity threshold.</p> | | | |

Drummarnock Wind Farm

wind2

Figure A5-1-1
Residential Properties within
2.5km and ZTV

Key

- Site boundary
- Turbine location
- 500m buffers from proposed turbines to 2.5km
- Dwelling within 2.5km (19)
- Dwelling beyond 2.5km

Cumulative Sites

- Wind farm in planning
- Operational wind farm
- Turbine in planning
- Operational turbine

Zone of Theoretical Visibility

180m blade tip

- 1 turbine visible
- 2 turbines visible
- 3 turbines visible
- 4 turbines visible

Generated using Ordnance Survey's Terrain 5 Dataset which does not take into account the screening effects of buildings.

ZTV calculated using ArcGIS 10.3 Viewshed tool with observer eye height 2m above ground and corrections for earth curvature and atmospheric refraction applied.

atmos
CONSULTING

0 0.25 0.5 1
Kilometers

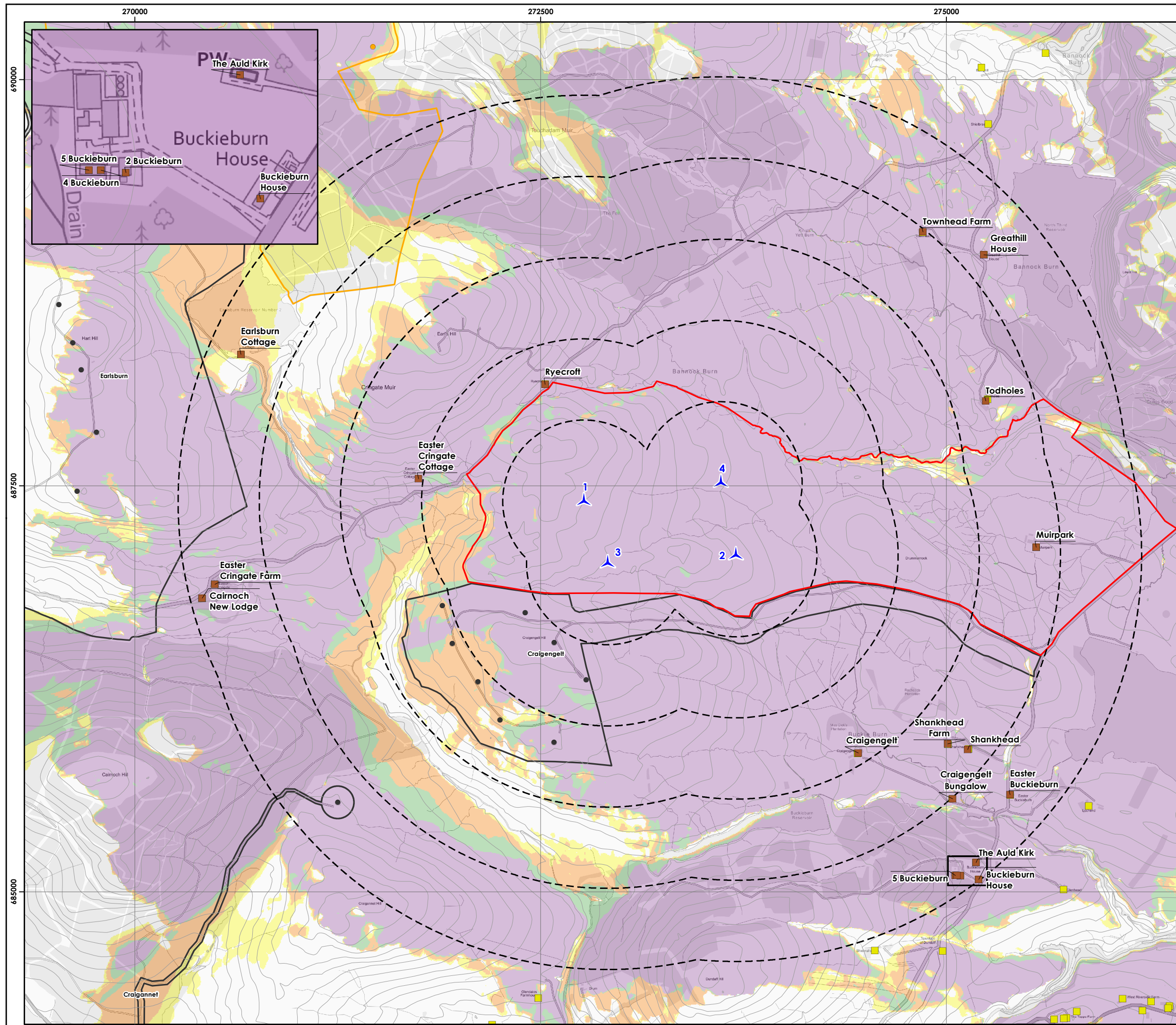


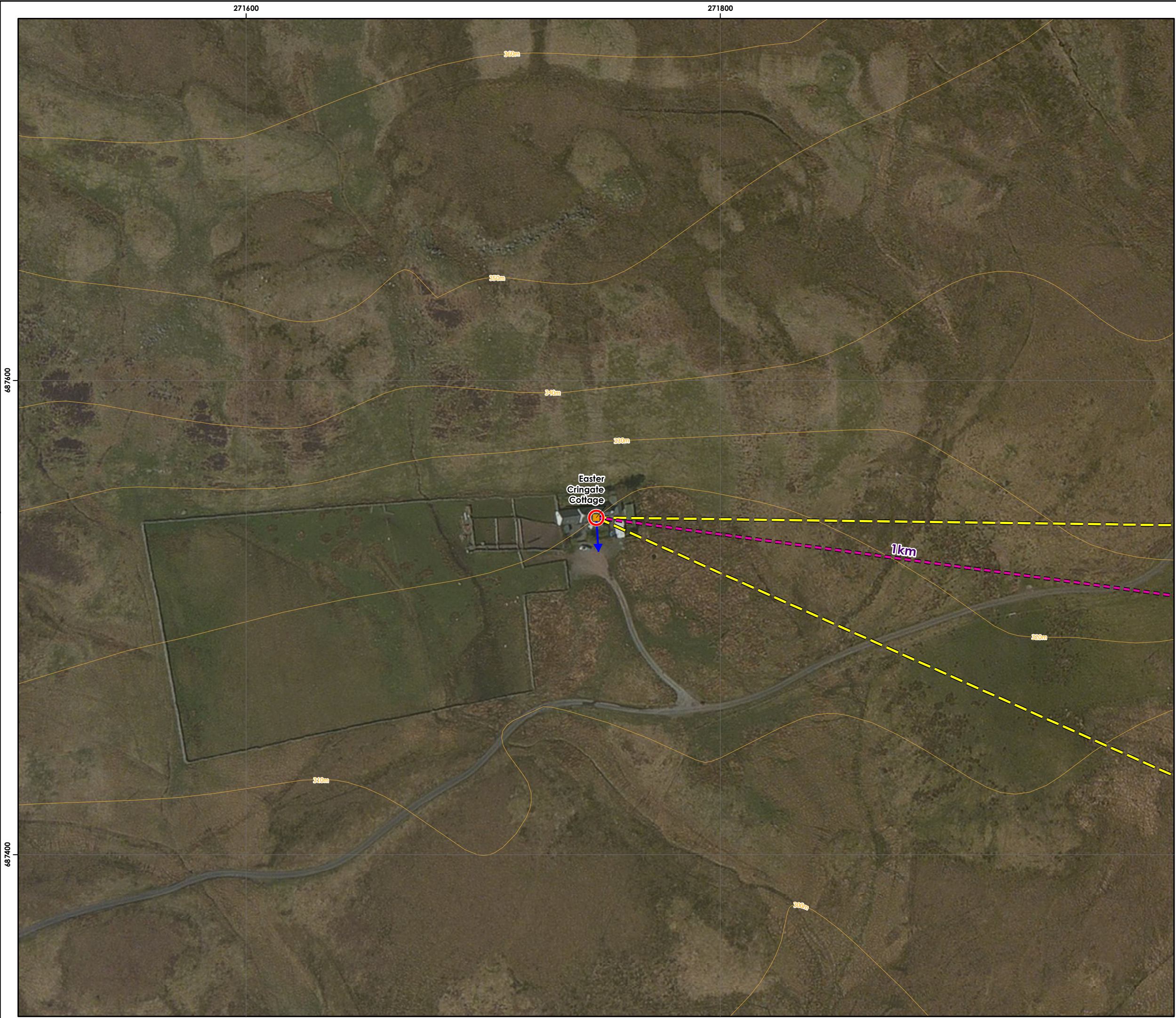
Scale @ A3:
1:22,000



© Crown copyright 2023. All rights reserved.
Ordnance survey licence number 100031673.

06/11/2023 TL026 40419/ZV/100a
Drawn by: JT Checked by: TH Approved by: LK



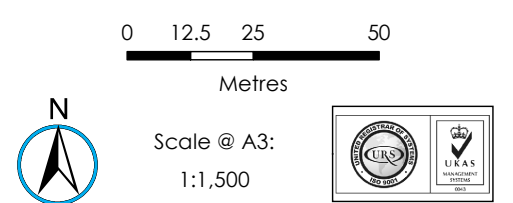
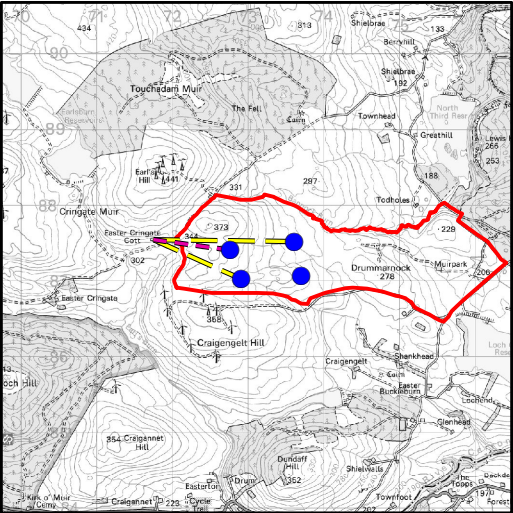


Drummannock
Wind Farm



Figure A5-1-2a
Residential Amenity Figure RA1
Easter Cringate Cottage

- Key
- Wireline location
 - Residential property
 - Angle of view to outer extents of visible turbines
 - Nearest turbine
 - Principle property orientation



Portions of this document include intellectual property of
Esri and its licensors and are used herein under license.
Copyright © 2023 Esri and its licensors. All rights reserved.