

Drummarnock
Wind Farm



Figure 8-3
Peat

Key

- Site boundary
- Proposed turbine
- Watercourse crossing

Proposed infrastructure

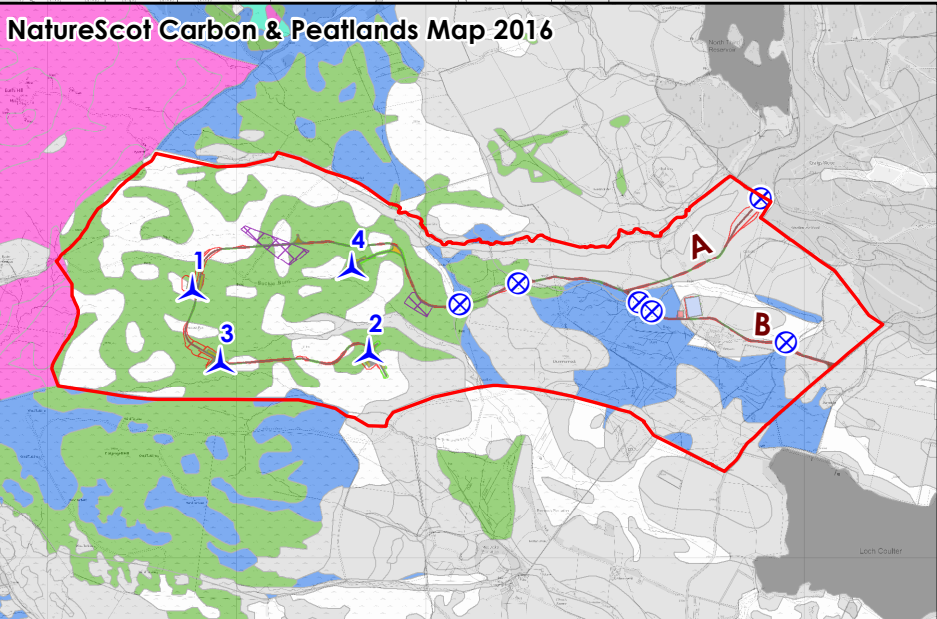
- Crane and auxiliary hardstandings
- Storage and working areas
- Turning head
- Substation
- Construction compound
- Earthworks - cut
- Earthworks - fill
- Borrow pit
- Onsite access track - cut
- Onsite access track - floating

Interpolated peat depth

- < 0.5m
- 0.5 - 1m
- 1 - 1.5m
- 1.5 - 2m
- 2 - 2.5m
- 2.5 - 3m
- > 3m

NatureScot Carbon & Peatlands Map 2016 (inset)

- Non-soil
- Unknown soil
- Mineral soil
- Class 1
- Class 2
- Class 3
- Class 4
- Class 5



atmos
CONSULTING

0 0.25 0.5 1
Kilometres

Scale @ A3:
1:15,000

© Crown copyright 2025. All rights reserved.
Ordnance survey licence number AC0000808122.

17/07/2025 TL026 40419/GY/043i
Drawn by: LB Checked by: TH Approved by: JG