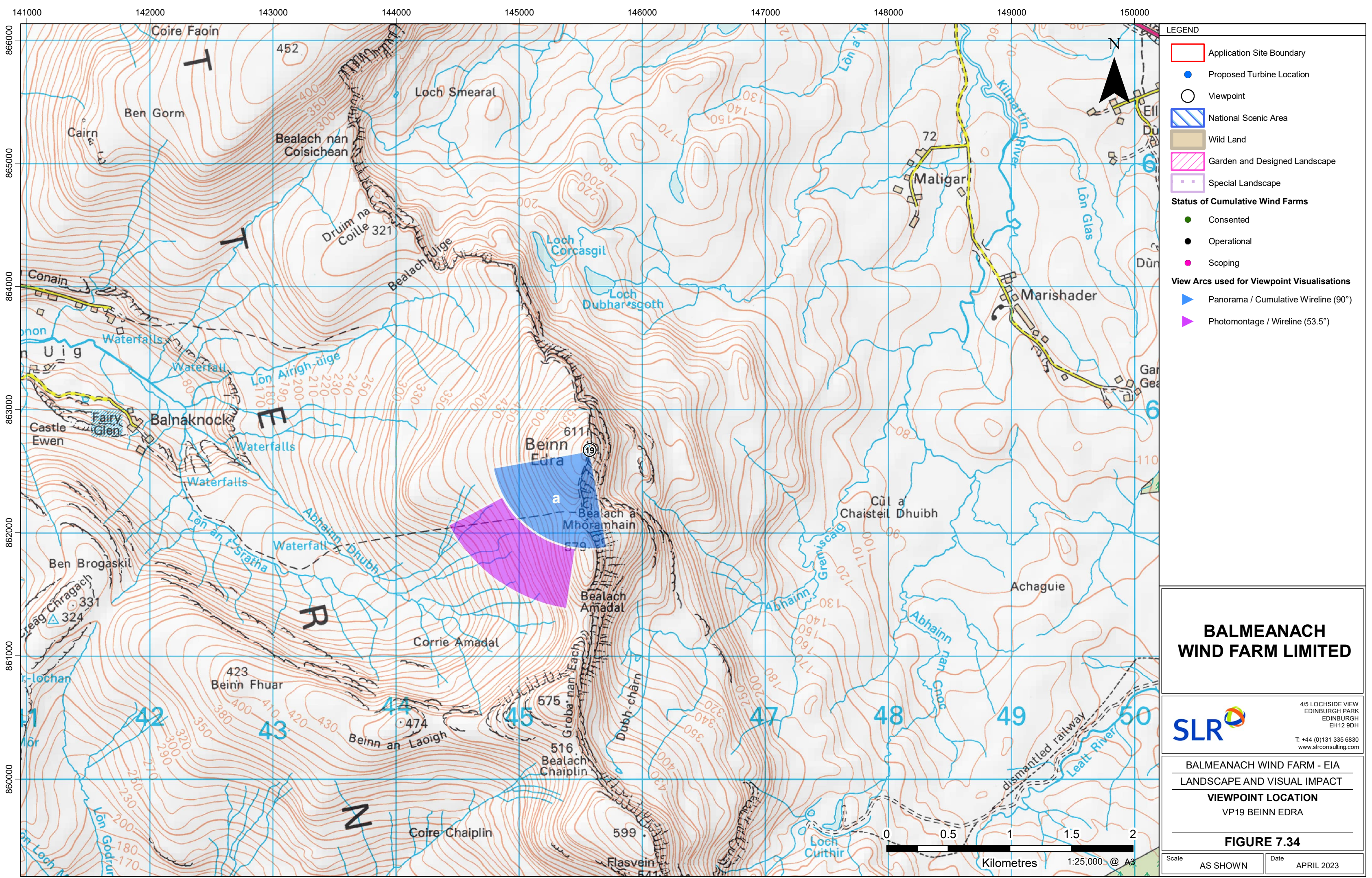


11223.00001.0252.0 Viewpoint Location Plan NatureScot



LEGEND

- Application Site Boundary
- Proposed Turbine Location
- Viewpoint
- National Scenic Area
- Wild Land
- Garden and Designed Landscape
- Special Landscape

Status of Cumulative Wind Farms

- Consented
- Operational
- Scoping

View Arcs used for Viewpoint Visualisations

- ▶ Panorama / Cumulative Wireline (90°)
- ▶ Photomontage / Wireline (53.5°)

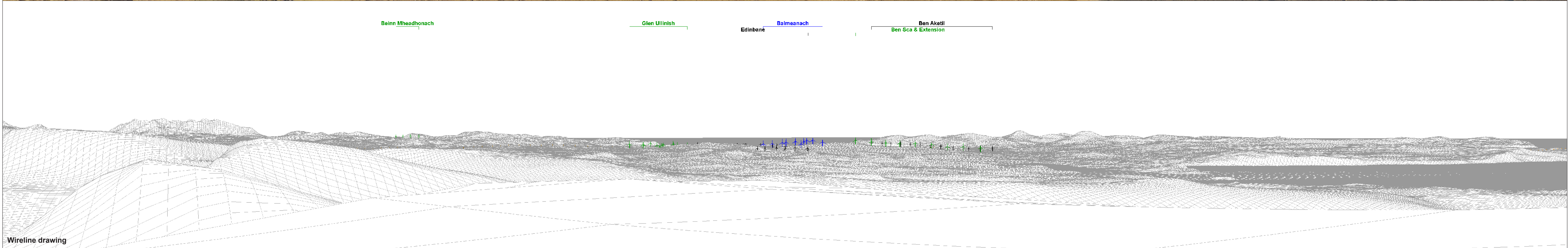
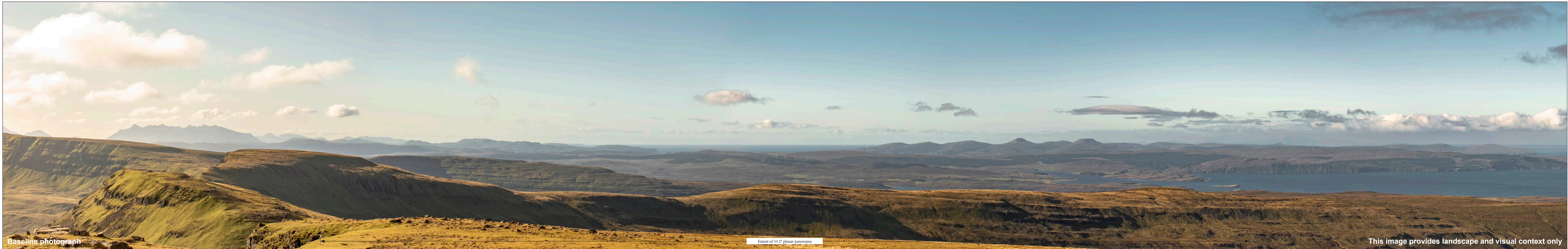
BALMEANACH WIND FARM LIMITED



BALMEANACH WIND FARM - EIA
LANDSCAPE AND VISUAL IMPACT
VIEWPOINT LOCATION
VP19 BEINN EDRA

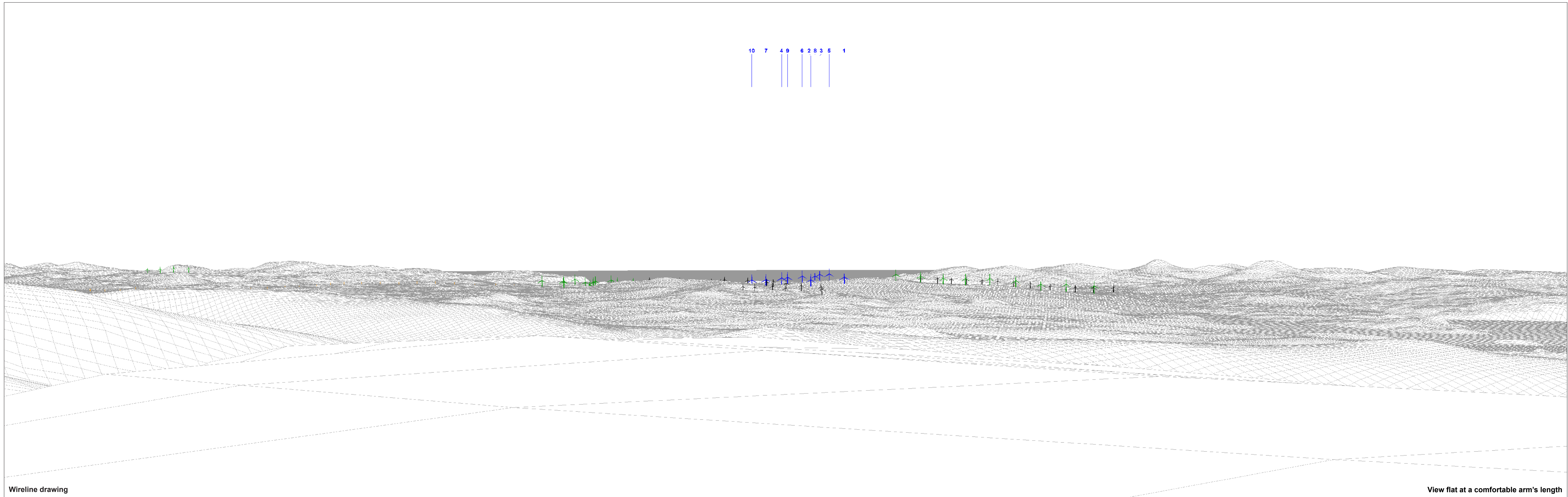
FIGURE 7.34
Scale AS SHOWN Date APRIL 2023

This drawing and its content are the copyright of SLR Consulting Ltd and may not be reproduced or amended except by prior written permission. SLR Consulting Ltd accepts no liability for any amendments made by other persons. Contains Ordnance Survey data © Crown copyright and database rights (2021) 0100031673. OS OpenData



OS reference: 145574 E 862670 N	Horizontal field of view: 90° (cylindrical projection)	Camera: Nikon Z 6II	Legend					
Eye level: 603.9 mAOD	Principal distance: 522 mm	Lens: 50mm f/1.4f	Balmeanach	Operational Wind Farm	Consented Wind Farm	In Planning Wind Farm	In Planning OHL Wooden Pole	In Planning OHL Pylon
Direction of view: 215°	Paper size: 841 x 297 mm (half A1)	Camera height: 1.5 m						
Nearest turbine: 18.83 km	Correct printed image size: 820 x 130 mm	Date and time: 01/10/2019 10:28						

Figure 7.34a
Viewpoint 19: Beinn Edra
Balmeanach Wind Farm
© Crown copyright. All rights reserved (2023). Licence number 0100031673



Wireline drawing

View flat at a comfortable arm's length

OS reference: 145574 E 862670 N
Eye level: 603.9 mAOD
Direction of view: 215°
Nearest turbine: 18.83 km
Horizontal field of view: 53.5° (planar projection)
Principal distance: 812.5 mm
Paper size: 841 x 297 mm (half A1)
Correct printed image size: 820 x 260 mm
Camera: Nikon Z 6II
Lens: 50mm f/1.4f
Camera height: 1.5 m
Date and time: 01/10/2019 10:28

Legend

 Balmeanach	 Operational Wind Farm	 Consented Wind Farm	 In Planning Wind Farm	 In Planning OHL Wooden Pole	 In Planning OHL Pylon
--	---	---	---	---	---



Photomontage: Proposed Development

View flat at a comfortable arm's length

OS reference: 145574 E 862670 N
Eye level: 603.9 mAOD
Direction of view: 215°
Nearest turbine: 18.83 km

Horizontal field of view: 53.5° (planar projection)
Principal distance: 812.5 mm
Paper size: 841 x 297 mm (half A1)
Correct printed image size: 820 x 260 mm

Camera: Nikon Z 6II
Lens: 50mm f/1.4f
Camera height: 1.5 m
Date and time: 01/10/2019 10:28

Figure 7.34c
Viewpoint 19: Beinn Edra
Balmeanach Wind Farm
© Crown copyright. All rights reserved (2023). Licence number 0100031673