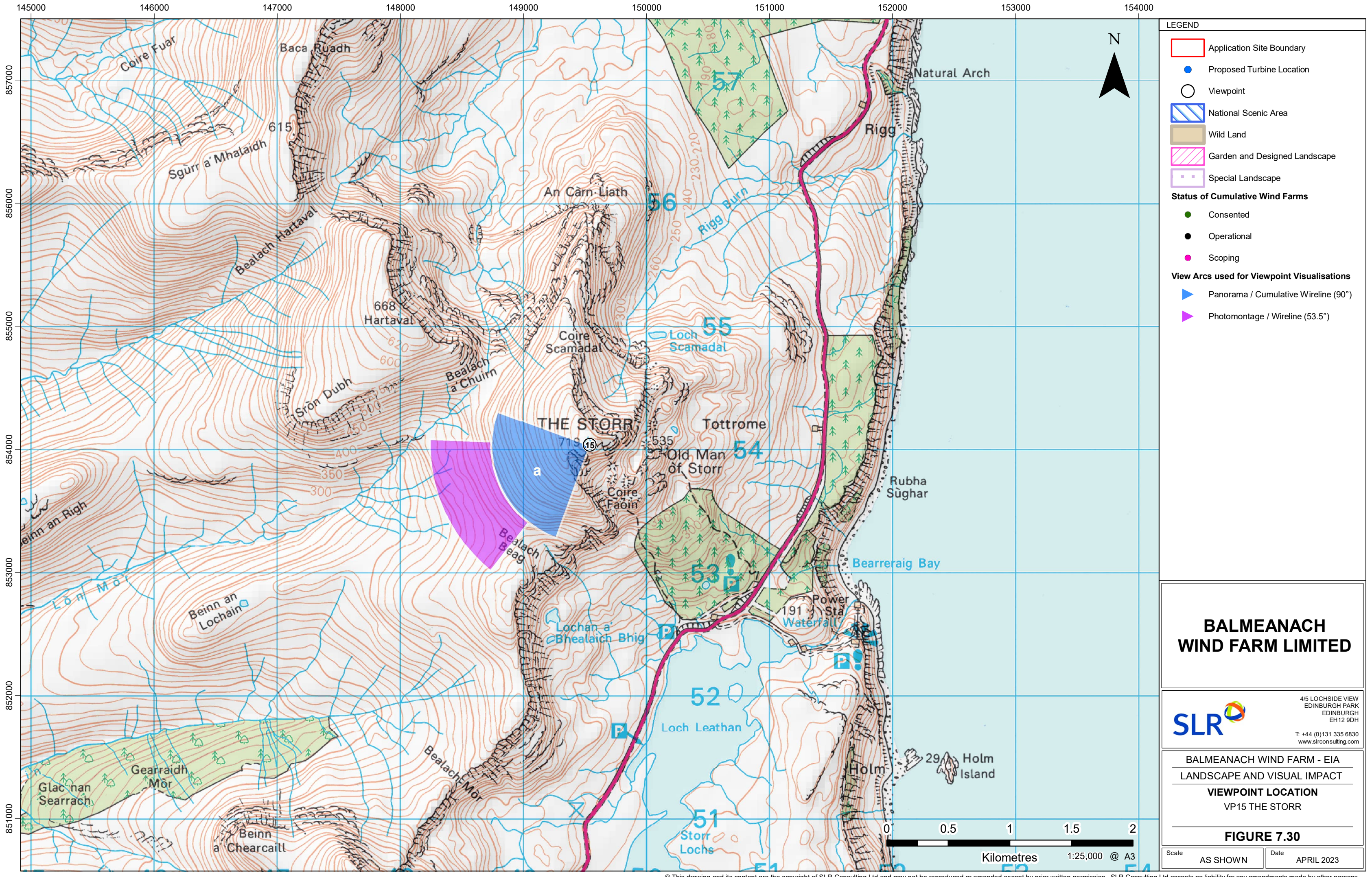


11223.00001.0252.0 Viewpoint Location Plan NatureScot



© This drawing and its content are the copyright of SLR Consulting Ltd and may not be reproduced or amended except by prior written permission. SLR Consulting Ltd accepts no liability for any amendments made by other persons. Contains Ordnance Survey data © Crown copyright and database rights (2021) 0100031673. OS OpenData

- LEGEND**
- Application Site Boundary
 - Proposed Turbine Location
 - Viewpoint
 - National Scenic Area
 - Wild Land
 - Garden and Designed Landscape
 - Special Landscape
- Status of Cumulative Wind Farms**
- Consented
 - Operational
 - Scoping
- View Arcs used for Viewpoint Visualisations**
- ▶ Panorama / Cumulative Wireline (90°)
 - ▶ Photomontage / Wireline (53.5°)

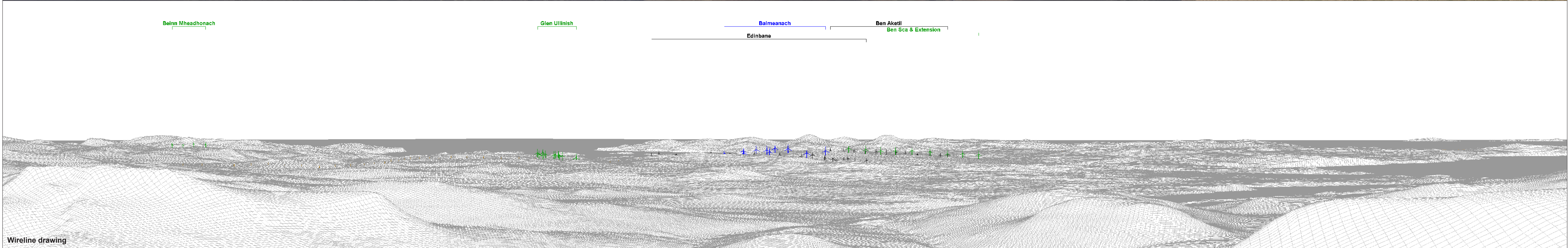
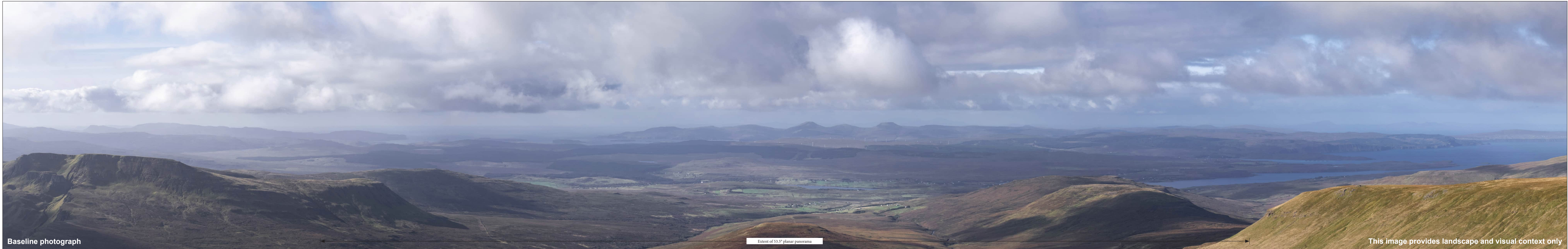
BALMEANACH WIND FARM LIMITED

SLR 4/5 LOCHSIDE VIEW
EDINBURGH PARK
EDINBURGH
EH12 6DH
T: +44 (0)131 335 6830
www.slrconsulting.com

BALMEANACH WIND FARM - EIA
LANDSCAPE AND VISUAL IMPACT
VIEWPOINT LOCATION
VP15 THE STORR

FIGURE 7.30

Scale AS SHOWN Date APRIL 2023



OS reference: 149540 E 854035 N
Eye level: 714.3 mAOD
Direction of view: 245°
Nearest turbine: 16.39 km

Horizontal field of view: 90° (cylindrical projection)
Principal distance: 522 mm
Paper size: 841 x 297 mm (half A1)
Correct printed image size: 820 x 130 mm

Camera: Nikon Z 6II
Lens: 50mm f/1.4f
Camera height: 1.5 m
Date and time: 02/10/2019 11:25

Legend

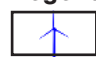
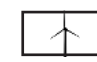
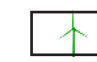



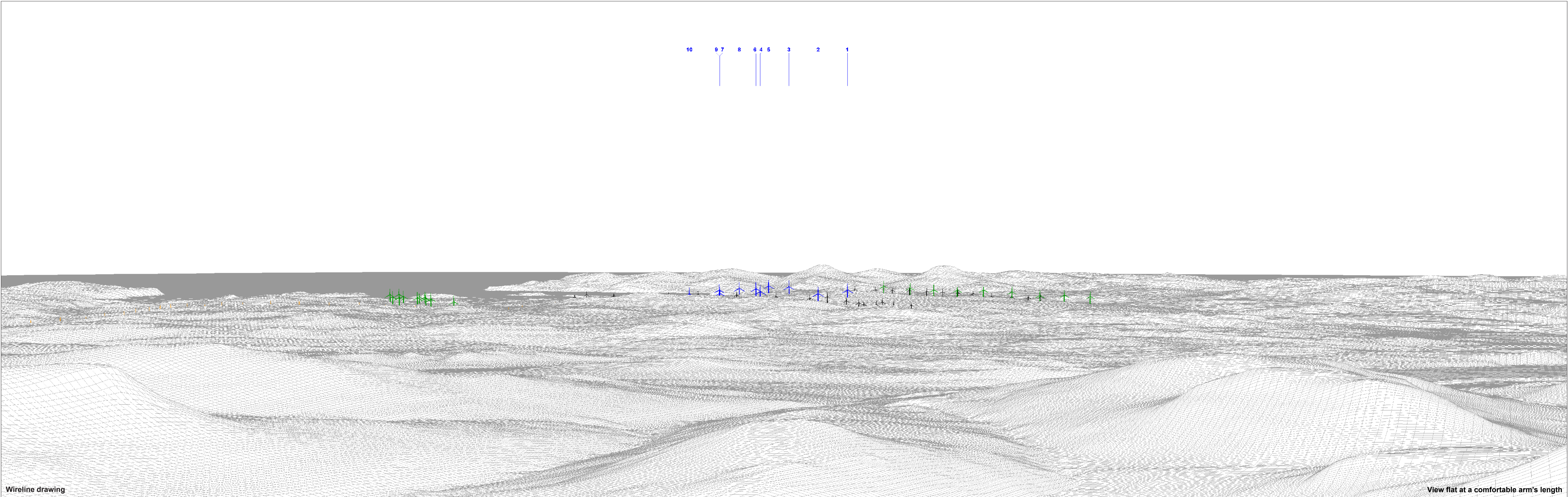
 Balmeanach	 Operational Wind Farm	 Consented Wind Farm	 In Planning Wind Farm	 In Planning OHL Wooden Pole	 In Planning OHL Pylon
--	---	---	---	---	---

Figure 7.30a
Viewpoint 15: The Storr
Balmeanach Wind Farm
© Crown copyright. All rights reserved (2023). Licence number 0100031673



OS reference: 149540 E 854035 N
Eye level: 714.3 mAOD
Direction of view: 245°
Nearest turbine: 16.39 km

Horizontal field of view: 53.5° (planar projection)
Principal distance: 812.5 mm
Paper size: 841 x 297 mm (half A1)
Correct printed image size: 820 x 260 mm

Camera: Nikon Z 6II
Lens: 50mm f/1.4f
Camera height: 1.5 m
Date and time: 02/10/2019 11:25

Legend

 Balmeanach	 Operational Wind Farm	 Consented Wind Farm	 In Planning Wind Farm	 In Planning OHL Wooden Pole	 In Planning OHL Pylon
--	---	---	---	---	---



Photomontage: Proposed Development

View flat at a comfortable arm's length

OS reference: 149540 E 854035 N	Horizontal field of view: 53.5° (planar projection)	Camera: Nikon Z 6II
Eye level: 714.3 mAOD	Principal distance: 812.5 mm	Lens: 50mm f/1.4f
Direction of view: 245°	Paper size: 841 x 297 mm (half A1)	Camera height: 1.5 m
Nearest turbine: 16.39 km	Correct printed image size: 820 x 260 mm	Date and time: 02/10/2019 11:25

Figure 7.30c
Viewpoint 15: The Storr
Balmeanach Wind Farm
© Crown copyright. All rights reserved (2023). Licence number 0100031673