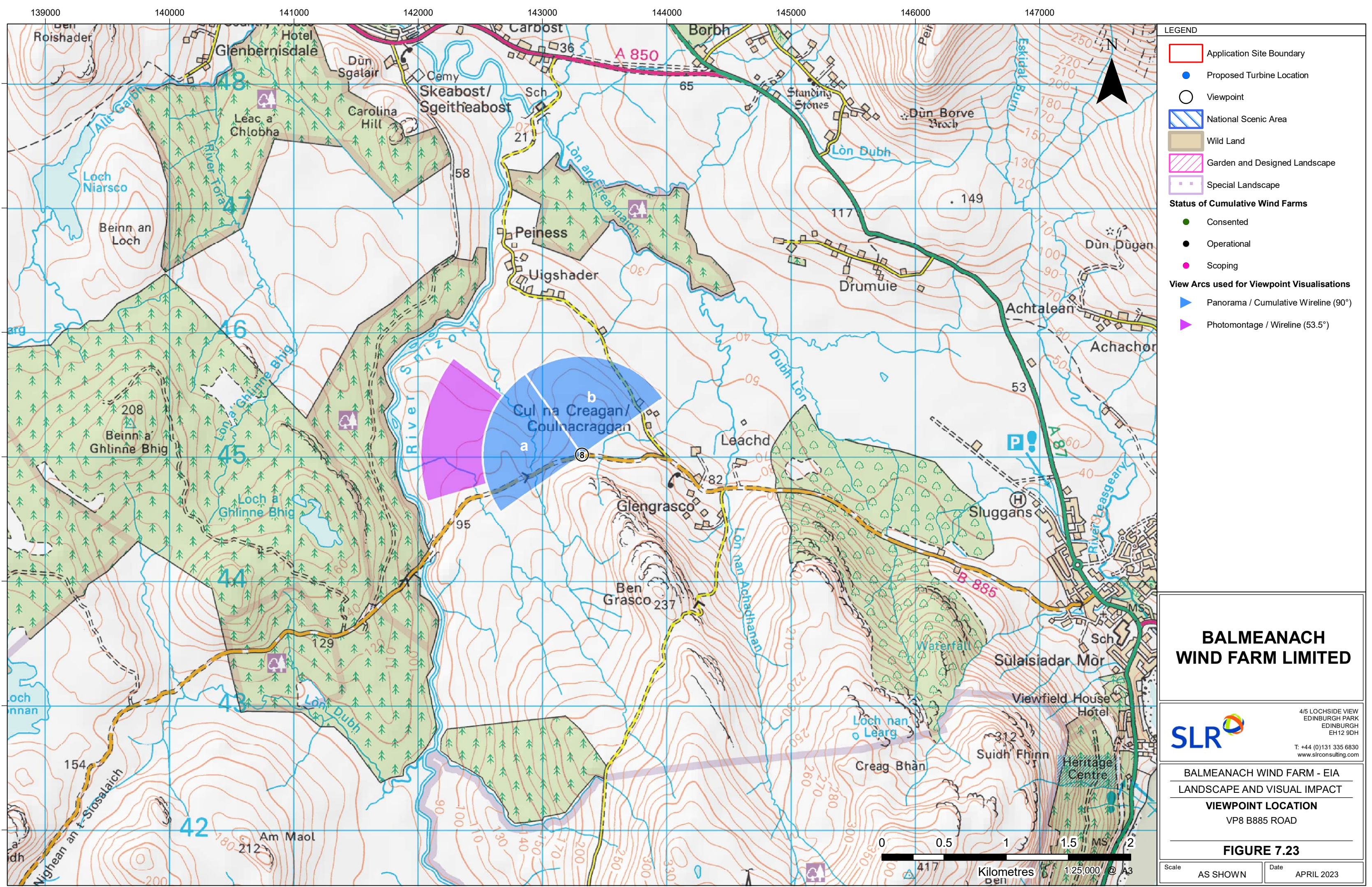


11223.00001.0252.0 Viewpoint Location Plan NatureScot



- LEGEND**
- Application Site Boundary
  - Proposed Turbine Location
  - Viewpoint
  - National Scenic Area
  - Wild Land
  - Garden and Designed Landscape
  - Special Landscape
- Status of Cumulative Wind Farms**
- Consented
  - Operational
  - Scoping
- View Arcs used for Viewpoint Visualisations**
- ▶ Panorama / Cumulative Wireline (90°)
  - ▶ Photomontage / Wireline (53.5°)

**BALMEANACH WIND FARM LIMITED**

**SLR**  
4/5 LOCHSIDE VIEW  
EDINBURGH PARK  
EDINBURGH  
EH12 6DH  
T: +44 (0)131 335 6830  
www.slrconsulting.com

BALMEANACH WIND FARM - EIA  
LANDSCAPE AND VISUAL IMPACT

**VIEWPOINT LOCATION**  
VP8 B885 ROAD

**FIGURE 7.23**

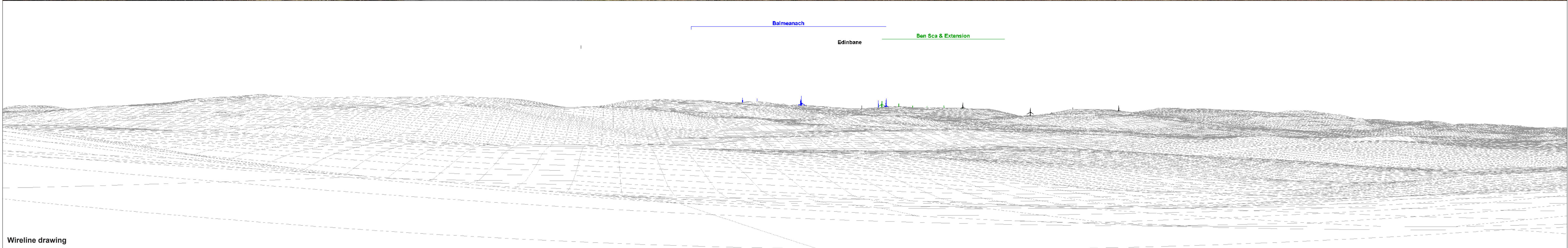
Scale AS SHOWN Date APRIL 2023

© This drawing and its content are the copyright of SLR Consulting Ltd and may not be reproduced or amended except by prior written permission. SLR Consulting Ltd accepts no liability for any amendments made by other persons. Contains Ordnance Survey data © Crown copyright and database rights (2021) 0100031673. OS OpenData



Baseline photograph

This image provides landscape and visual context only

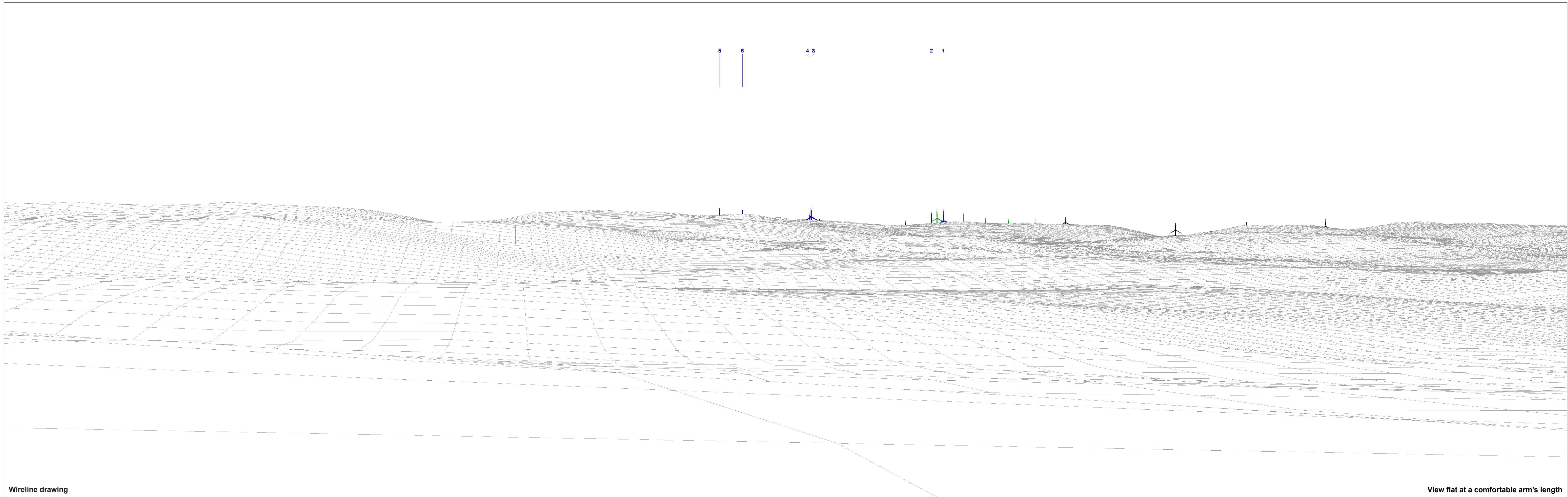


Wireline drawing

**OS reference:** 143319 E 845016 N  
**Eye level:** 109.0 mAOB  
**Direction of view:** 280°  
**Nearest turbine:** 8.93 km  
**Horizontal field of view:** 90° (cylindrical projection)  
**Principal distance:** 522 mm  
**Paper size:** 841 x 297 mm (half A1)  
**Correct printed image size:** 820 x 130 mm  
**Camera:** Nikon D750  
**Lens:** 50mm F1.8  
**Camera height:** 1.5 m  
**Date and time:** 01/03/2023 11:59

**Legend**

 Balmeanach	 Operational Wind Farm	 Consented Wind Farm	 In Planning Wind Farm	 In Planning OHL Wooden Pole	 In Planning OHL Pylon
--	---	---	---	---	---



Wireline drawing

View flat at a comfortable arm's length

**OS reference:** 143319 E 845016 N  
**Eye level:** 109.0 mAOD  
**Direction of view:** 280°  
**Nearest turbine:** 8.93 km  
**Horizontal field of view:** 53.5° (planar projection)  
**Principal distance:** 812.5 mm  
**Paper size:** 841 x 297 mm (half A1)  
**Correct printed image size:** 820 x 260 mm  
**Camera:** Nikon D750  
**Lens:** 50mm F1.8  
**Camera height:** 1.5 m  
**Date and time:** 01/03/2023 11:59

**Legend**

 Balmeanach	 Operational Wind Farm	 Consented Wind Farm	 In Planning Wind Farm	 In Planning OHL Wooden Pole	 In Planning OHL Pylon
--	---	---	---	---	---



Photomontage: Proposed Development

View flat at a comfortable arm's length

OS reference: 143319 E 845016 N  
Eye level: 109.0 mAO  
Direction of view: 280°  
Nearest turbine: 8.93 km

Horizontal field of view: 53.5° (planar projection)  
Principal distance: 812.5 mm  
Paper size: 841 x 297 mm (half A1)  
Correct printed image size: 820 x 260 mm

Camera: Nikon D750  
Lens: 50mm F1.8  
Camera height: 1.5 m  
Date and time: 01/03/2023 11:59

Figure 7.23c  
Viewpoint 8: B885 Road  
Balmeanach Wind Farm  
© Crown copyright. All rights reserved (2023). Licence number 0100031673