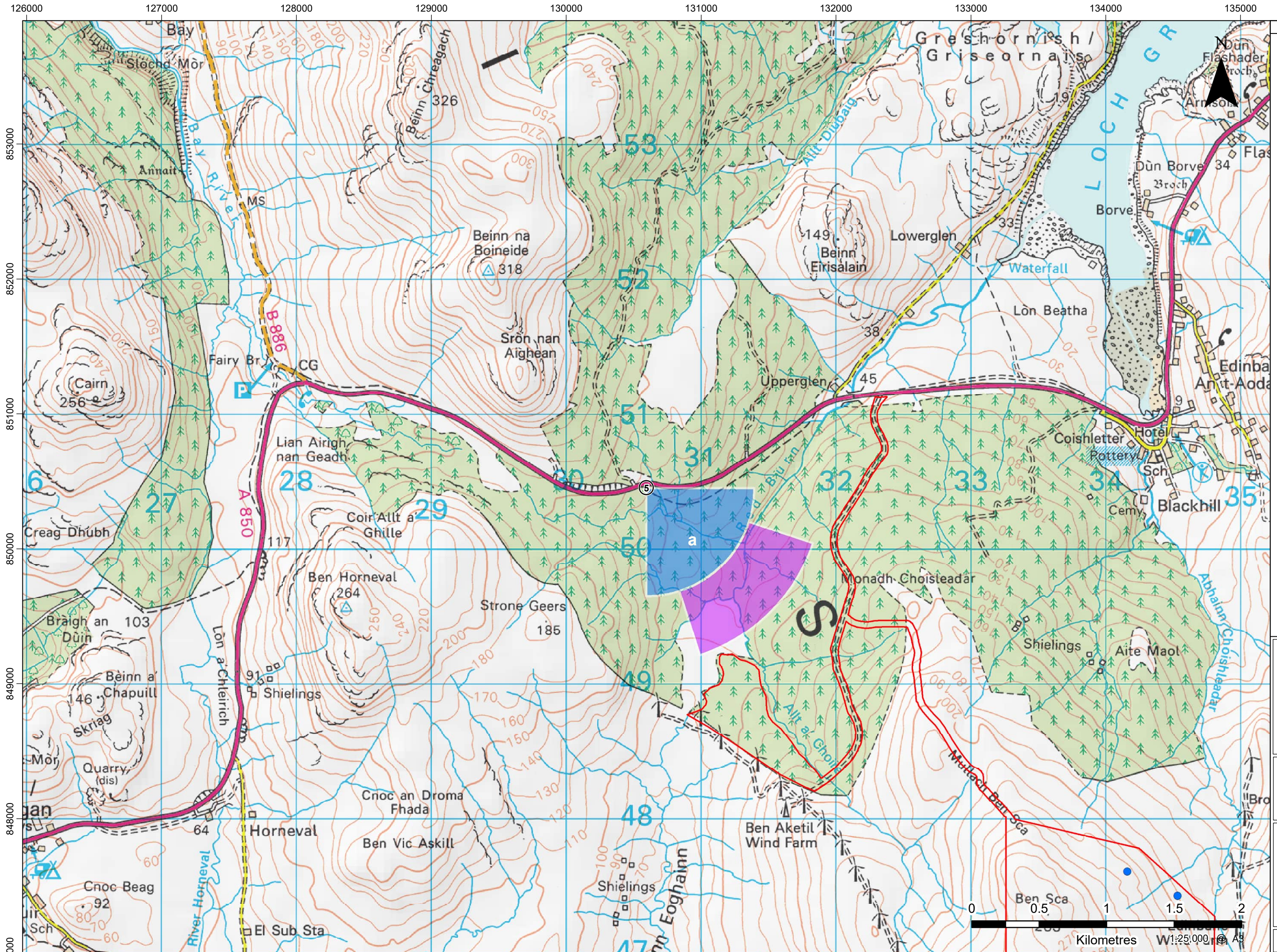


11223.00001.0252.0 Viewpoint Location Plan NatureScot



11223.00001.0252.0 Viewpoint Location Plan NatureScot

- LEGEND**
- Application Site Boundary
 - Proposed Turbine Location
 - Viewpoint
 - National Scenic Area
 - Wild Land
 - Garden and Designed Landscape
 - Special Landscape
- Status of Cumulative Wind Farms**
- Consented
 - Operational
 - Scoping
- View Arcs used for Viewpoint Visualisations**
- ▶ Panorama / Cumulative Wireline (90°)
 - ▶ Photomontage / Wireline (53.5°)

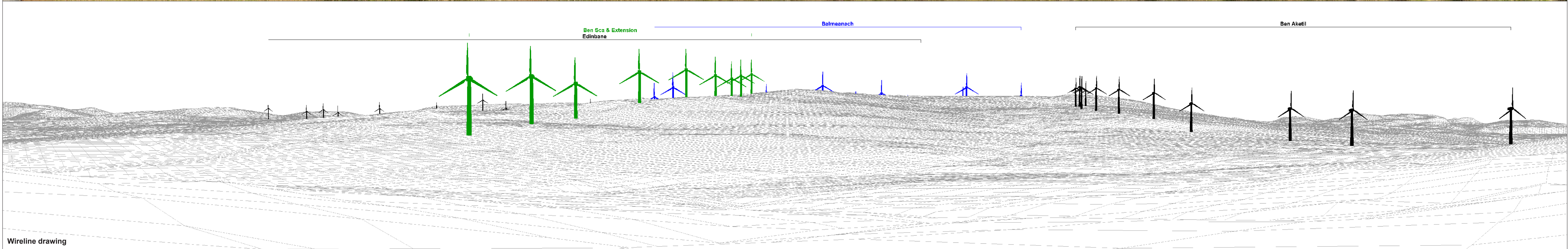
BALMEANACH WIND FARM LIMITED

SLR
 4/5 LOCHSIDE VIEW
 EDINBURGH PARK
 EDINBURGH
 EH12 6DH
 T: +44 (0)131 335 6830
 www.slrconsulting.com

BALMEANACH WIND FARM - EIA
 LANDSCAPE AND VISUAL IMPACT
VIEWPOINT LOCATION
 VP5 A850 BETWEEN DUNVEGAN AND EDINBANE

FIGURE 7.20
 Scale AS SHOWN Date APRIL 2023

© This drawing and its content are the copyright of SLR Consulting Ltd and may not be reproduced or amended except by prior written permission. SLR Consulting Ltd accepts no liability for any amendments made by other persons. Contains Ordnance Survey data © Crown copyright and database rights (2021) 0100031673. OS OpenData



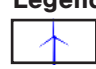
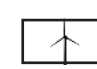
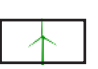
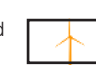

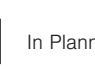
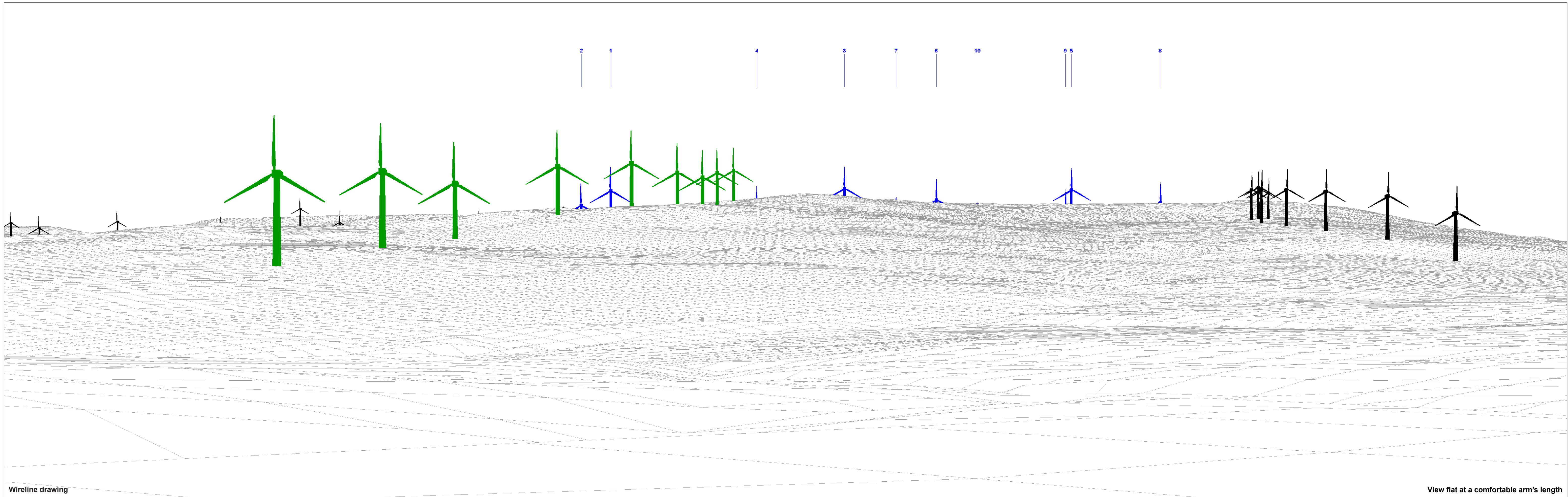
OS reference: 130595 E 850452 N	Horizontal field of view: 90° (cylindrical projection)	Camera: Nikon Z 6II	Legend			
Eye level: 123.1 mAOB	Principal distance: 522 mm	Lens: 50mm f/1.4f	 Balmeanach	 Operational Wind Farm	 Consented Wind Farm	 In Planning Wind Farm
Direction of view: 135°	Paper size: 841 x 297 mm (half A1)	Camera height: 1.5 m	 In Planning OHL Wooden Pole	 In Planning OHL Pylon		
Nearest turbine: 4.57 km	Correct printed image size: 820 x 130 mm	Date and time: 23/08/2021 14:53				

Figure 7.20a
Viewpoint 5: A850 between Dunvegan and Edinbane
Balmeanach Wind Farm
© Crown copyright. All rights reserved (2023). Licence number 0100031673



OS reference: 130595 E 850452 N
 Eye level: 123.1 mAOD
 Direction of view: 135°
 Nearest turbine: 4.57 km

Horizontal field of view: 53.5° (planar projection)
 Principal distance: 812.5 mm
 Paper size: 841 x 297 mm (half A1)
 Correct printed image size: 820 x 260 mm

Camera: Nikon Z 6II
 Lens: 50mm f/1.4f
 Camera height: 1.5 m
 Date and time: 23/08/2021 14:53

Legend

 Balmeanach	 Operational Wind Farm	 Consented Wind Farm	 In Planning Wind Farm	 In Planning OHL Wooden Pole	 In Planning OHL Pylon
--	---	---	---	---	---

Figure 7.20b
 Viewpoint 5: A850 between Dunvegan and Edinbane
 Balmeanach Wind Farm

© Crown copyright. All rights reserved (2023). Licence number 0100031673



Photomontage: Proposed Development

View flat at a comfortable arm's length

OS reference: 130595 E 850452 N
Eye level: 123.1 mAOD
Direction of view: 135°
Nearest turbine: 4.57 km

Horizontal field of view: 53.5° (planar projection)
Principal distance: 812.5 mm
Paper size: 841 x 297 mm (half A1)
Correct printed image size: 820 x 260 mm

Camera: Nikon Z 6II
Lens: 50mm f/1.4f
Camera height: 1.5 m
Date and time: 23/08/2021 14:53

Figure 7.20c
Viewpoint 5: A850 between Dunvegan and Edinbane
Balmeanach Wind Farm
© Crown copyright. All rights reserved (2023). Licence number 0100031673