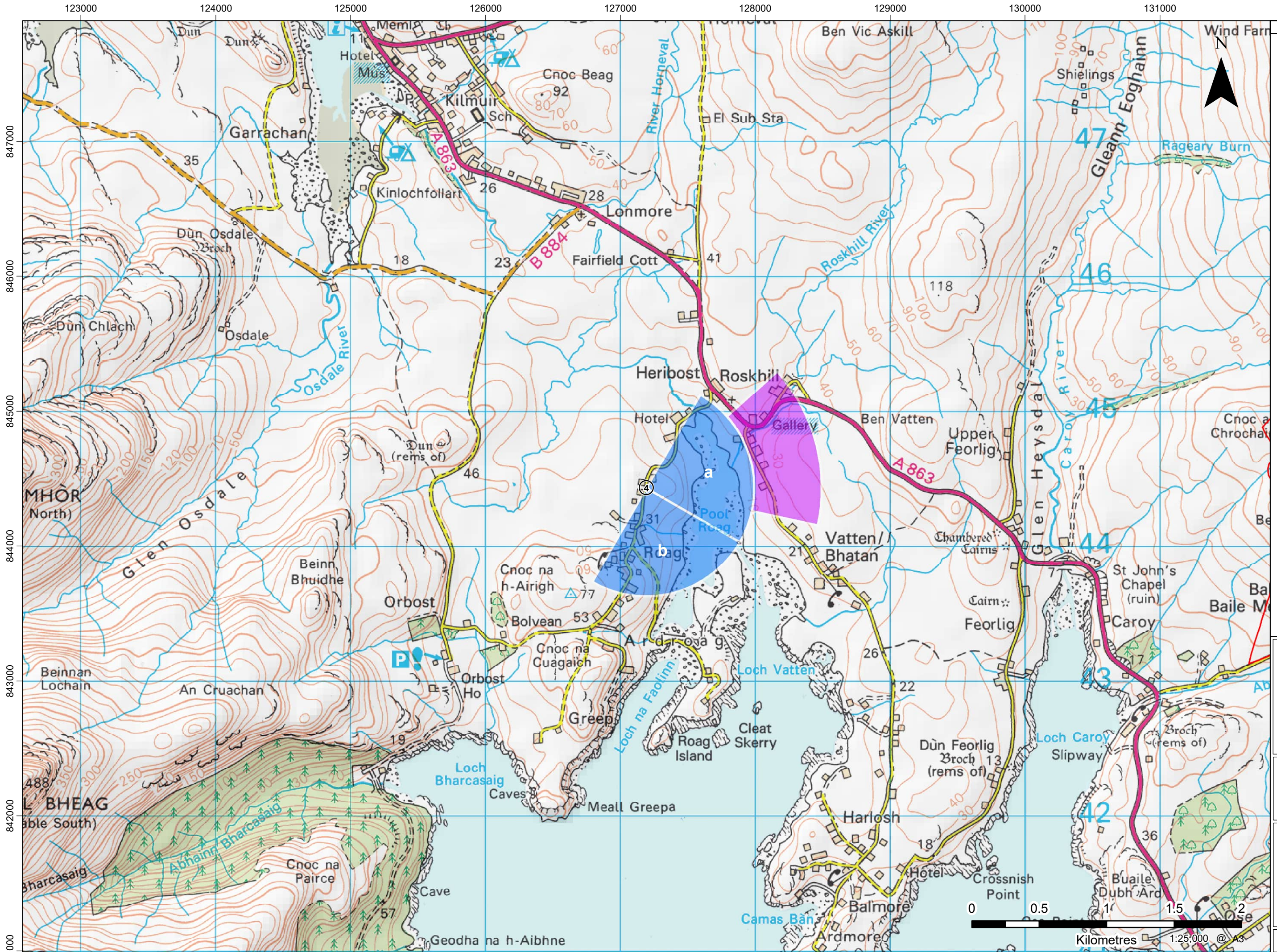


11223.00001.0252.0 Viewpoint Location Plan NatureScot



- LEGEND**
- Application Site Boundary
 - Proposed Turbine Location
 - Viewpoint
 - National Scenic Area
 - Wild Land
 - Garden and Designed Landscape
 - Special Landscape
- Status of Cumulative Wind Farms**
- Consented
 - Operational
 - Scoping
- View Arcs used for Viewpoint Visualisations**
- ▶ Panorama / Cumulative Wireline (90°)
 - ▶ Photomontage / Wireline (53.5°)

BALMEANACH WIND FARM LIMITED

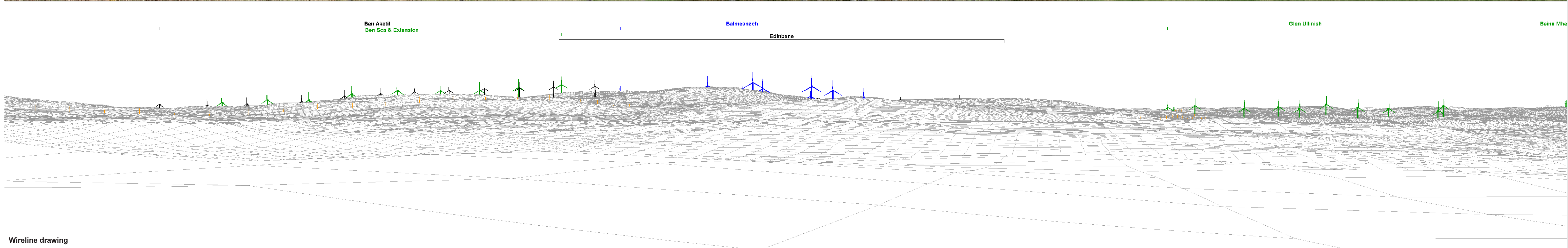
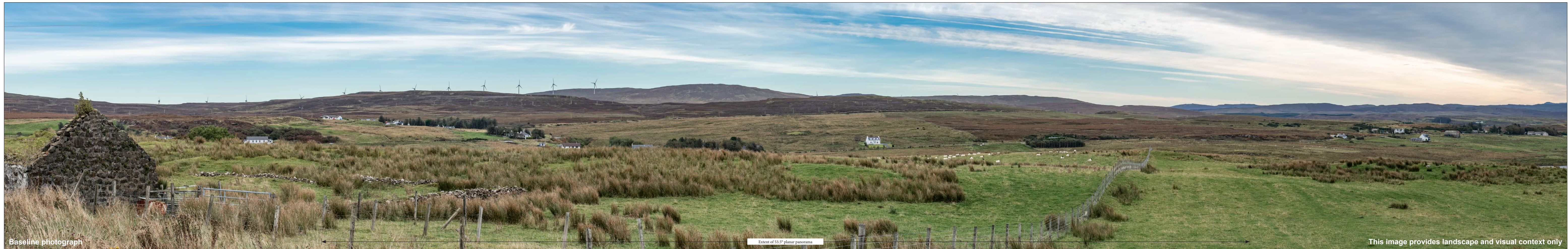
SLR
 4/5 LOCHSIDE VIEW
 EDINBURGH PARK
 EDINBURGH
 EH12 6DH
 T: +44 (0)131 335 6830
 www.slrconsulting.com

BALMEANACH WIND FARM - EIA
 LANDSCAPE AND VISUAL IMPACT
 VIEWPOINT LOCATION
 VP4 ROAG

FIGURE 7.19

Scale AS SHOWN Date APRIL 2023

© This drawing and its content are the copyright of SLR Consulting Ltd and may not be reproduced or amended except by prior written permission. SLR Consulting Ltd accepts no liability for any amendments made by other persons. Contains Ordnance Survey data © Crown copyright and database rights (2021) 0100031673. OS OpenData



OS reference: 127193 E 844432 N
 Eye level: 34.6 mAOD
 Direction of view: 75°
 Nearest turbine: 6.42 km

Horizontal field of view: 90° (cylindrical projection)
 Principal distance: 522 mm
 Paper size: 841 x 297 mm (half A1)
 Correct printed image size: 820 x 130 mm

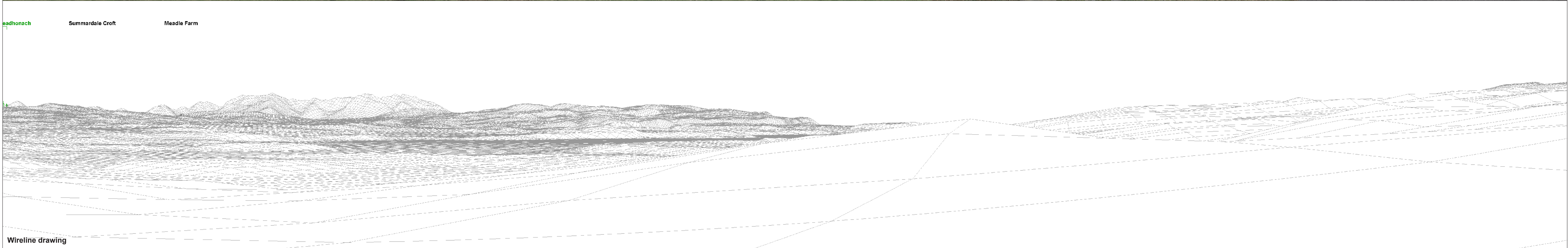
Camera: Nikon Z 6II
 Lens: 50mm f/1.4f
 Camera height: 1.5 m
 Date and time: 02/10/2019 13:42





Baseline photograph

This image provides landscape and visual context only



eadhonach Summardale Croft Meadle Farm

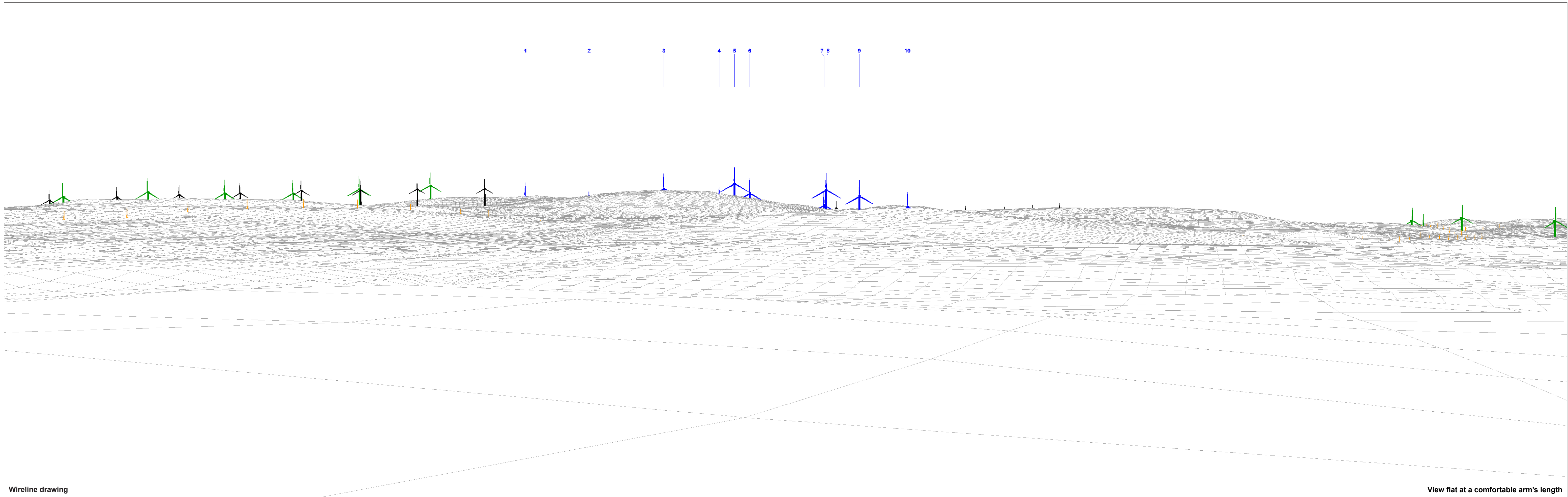
Wireline drawing

OS reference: 127193 E 844432 N
 Eye level: 34.6 mAOD
 Direction of view: 165°
 Nearest turbine: 6.42 km

Horizontal field of view: 90° (cylindrical projection)
 Principal distance: 522 mm
 Paper size: 841 x 297 mm (half A1)
 Correct printed image size: 820 x 130 mm

Camera: Nikon Z 6II
 Lens: 50mm f/1.4f
 Camera height: 1.5 m
 Date and time: 02/10/2019 13:42





Wireline drawing

View flat at a comfortable arm's length

OS reference: 127193 E 844432 N
 Eye level: 34.6 mAOD
 Direction of view: 75°
 Nearest turbine: 6.42 km

Horizontal field of view: 53.5° (planar projection)
 Principal distance: 812.5 mm
 Paper size: 841 x 297 mm (half A1)
 Correct printed image size: 820 x 260 mm

Camera: Nikon Z 6II
 Lens: 50mm f/1.4f
 Camera height: 1.5 m
 Date and time: 02/10/2019 13:42

Legend

 Balmeanach	 Operational Wind Farm	 Consented Wind Farm	 In Planning Wind Farm	 In Planning OHL Wooden Pole	 In Planning OHL Pylon
--	---	---	---	---	---



Photomontage: Proposed Development

View flat at a comfortable arm's length

<p>OS reference: 127193 E 844432 N Eye level: 34.6 mAOD Direction of view: 75° Nearest turbine: 6.42 km</p>	<p>Horizontal field of view: 53.5° (planar projection) Principal distance: 812.5 mm Paper size: 841 x 297 mm (half A1) Correct printed image size: 820 x 260 mm</p>	<p>Camera: Nikon Z 6II Lens: 50mm f/1.4f Camera height: 1.5 m Date and time: 02/10/2019 13:42</p>	 In Planning OHL Pylon	<p>Figure 7.19d Viewpoint 4: Roag Balmeanach Wind Farm <small>© Crown copyright. All rights reserved (2023). Licence number 0100031673</small></p>
--	--	--	---	--