

LEGEND

- Application Site Boundary
- Proposed Turbine Location
- Proposed Turbine Location 10 - 30 km Buffer (10 km Increments)
- Core Path
- Skye Trail
- A Road
- B Road

**Zone of Theoretical Visibility (ZTV):
Bare Earth Blade Tip 149.9 m**

- High : 10 Turbines Visible
- Low : 1 Turbine Visible

Note

This Zone of Theoretical Visibility (ZTV) has been generated using ESRI ArcGIS Spatial Analyst extension. The digital terrain model (DTM) has been derived from OS Terrain 5 dataset (+/-2 m) up to 45 km from turbine locations, and OS Terrain 50 dataset (+/-10 m). Earth curvature has been included in the ZTV calculation and refraction of light has been applied using SNH guidance settings. The ZTV has been generated from a viewing height of 2 m above ground level which falls within recommendations by "Visual Representation of Windfarms" prepared for Scottish Natural Heritage (SNH) February 2017 - Version 2.2.

The use of ZTV mapping at this stage is limited and the following assumptions should be noted:

- The ZTV has been generated using the proposed turbine locations for Balmeanach Wind Farm.
- The proposed turbine tip heights of 149.9 m have been used for generating the ZTV.
- The ZTV is generated from a bare earth terrain and does not account for the screening effect of features within the landscape such as settlements and woodland. It does not indicate potential visual effects or show the likely significance of effects. It shows potential theoretical visibility only. The ZTV has been produced for the purpose of informing 'on the ground' visual assessment.

BALMEANACH WIND FARM LIMITED

SLR

4/5 LOCHSIDE VIEW
EDINBURGH PARK
EDINBURGH
EH12 9DH

T: +44 (0)131 335 6830
www.slrconsulting.com

BALMEANACH WIND FARM - EIA

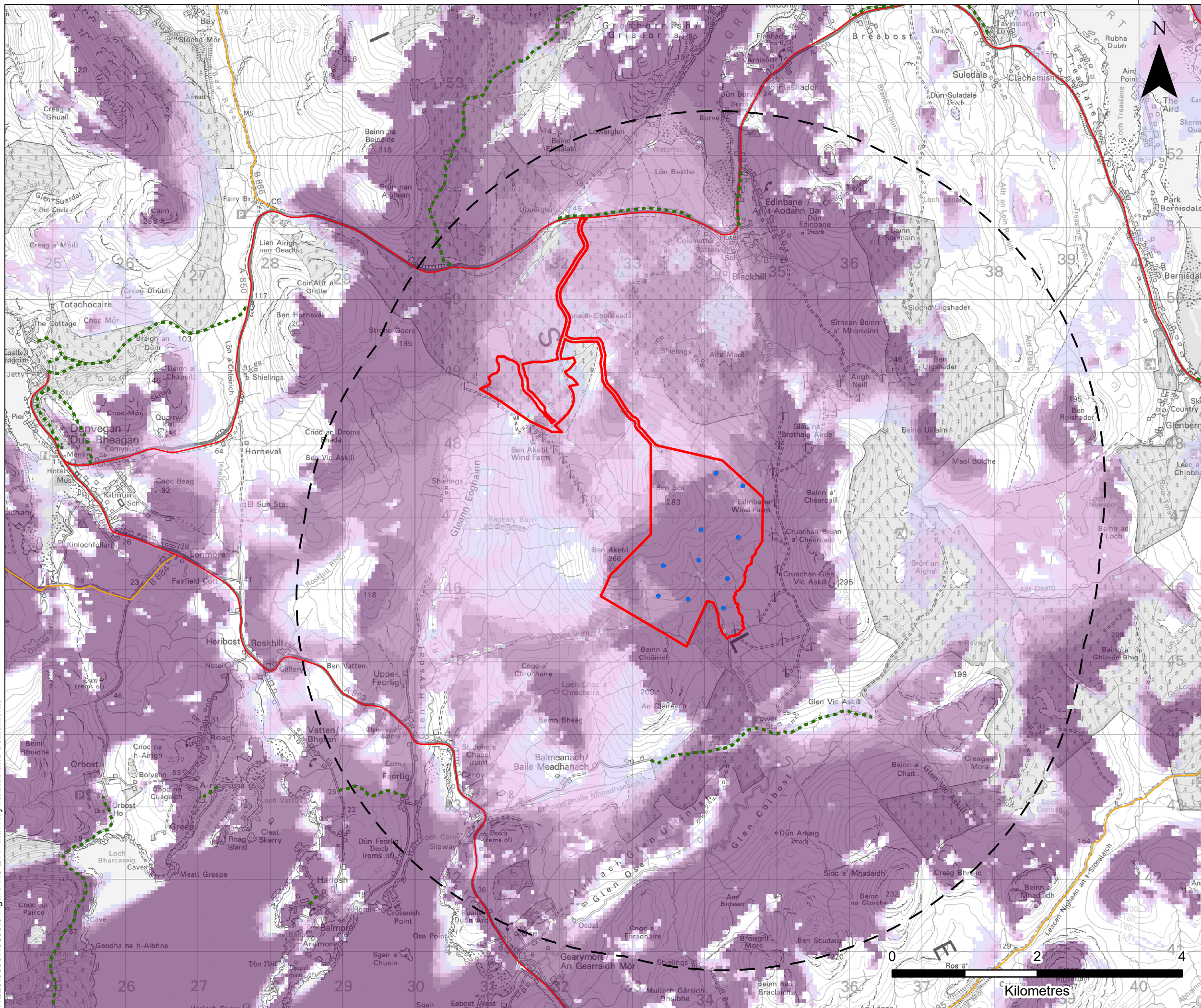
LANDSCAPE AND VISUAL

**ZTV WITH KEY ROUTES
AND SETTLEMENTS**

FIGURE 7.9a

Scale 1:250,000 @ A3 Date JULY 2023

11223.00001.0309.0 Figure 7.9 ZTV with Key Routes and Settlements



LEGEND

- Application Site Boundary
- Proposed Turbine Location
- Proposed Turbine Location 5 km Buffer
- Core Path
- A Road
- B Road

**Zone of Theoretical Visibility (ZTV):
Bare Earth Blade Tip 149.9 m**

- High : 10 Turbines Visible
- Low : 1 Turbine Visible

Note

This Zone of Theoretical Visibility (ZTV) has been generated using ESRI ArcGIS Spatial Analyst extension. The digital terrain model (DTM) has been derived from OS Terrain 5 dataset (+/-2 m) up to 45 km from turbine locations, and OS Terrain 50 dataset (+/-10 m). Earth curvature has been included in the ZTV calculation and refraction of light has been applied using SNH guidance settings. The ZTV has been generated from a viewing height of 2 m above ground level which falls within recommendations by "Visual Representation of Windfarms" prepared for Scottish Natural Heritage (SNH) February 2017 - Version 2.2.

The use of ZTV mapping at this stage is limited and the following assumptions should be noted:

- The ZTV has been generated using the proposed turbine locations for Balmeanach Wind Farm.
- The proposed turbine tip heights of 149.9 m have been used for generating the ZTV.
- The ZTV is generated from a bare earth terrain and does not account for the screening effect of features within the landscape such as settlements and woodland. It does not indicate potential visual effects or show the likely significance of effects. It shows potential theoretical visibility only. The ZTV has been produced for the purpose of informing 'on the ground' visual assessment.

BALMEANACH WIND FARM LIMITED

SLR

4/5 LOCHSIDE VIEW
EDINBURGH PARK
EDINBURGH
EH12 9DH

T: +44 (0)131 335 6830
www.slrconsulting.com

BALMEANACH WIND FARM - EIA LANDSCAPE AND VISUAL ZTV WITH KEY ROUTES AND SETTLEMENTS FIGURE 7.9b

Scale 1:50,000 @ A3 Date JULY 2023

11223-00001-0309-0 Figure 7.9 ZTV with Key Routes and Settlements