

LEGEND

- Application Site Boundary
- Proposed Turbine Location
- ★ Proposed Permanent Met Mast
- Proposed Crane Hardstanding
- Proposed Construction Compound
- Proposed Substation
- Proposed Turning Head
- Potential Borrow Pit
- Existing Access Track
- Consented Access Track

Proposed Track Alignment

- Proposed
- Proposed Option A
- Proposed Option A1
- Proposed Option A2
- Proposed Option B

National Vegetation Classification Outline

Peat Depth (m)

- 0
- 0 - 0.5
- 0.5 - 1
- 1 - 1.5
- 1.5 - 2
- 2 - 2.5
- 2.5 - 3
- > 3

BALMEANACH WIND FARM LIMITED

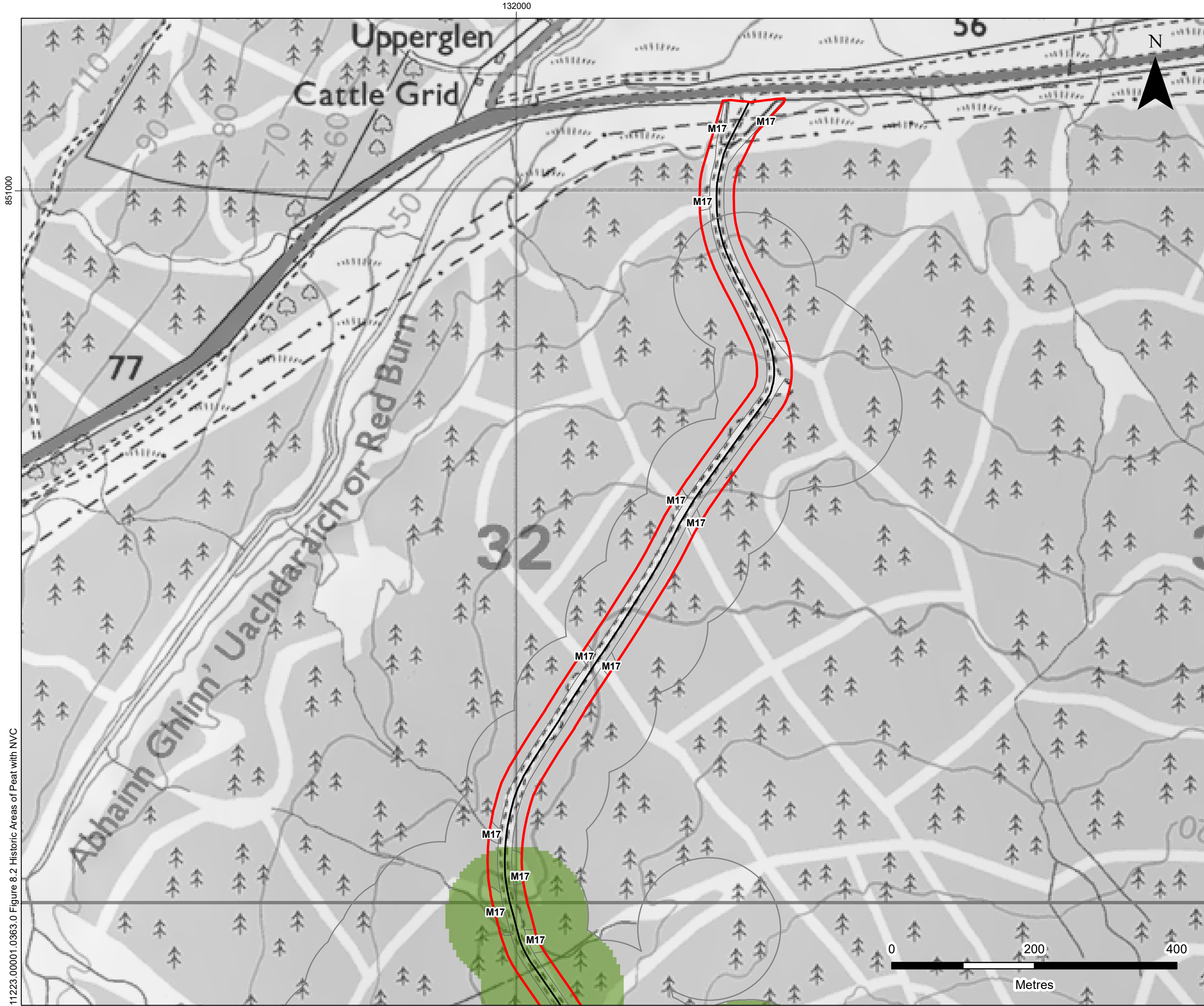
4/5 LOCHSIDE VIEW
EDINBURGH PARK
EDINBURGH
EH12 9DH

T: +44 (0)131 335 6830
www.slrconsulting.com

BALMEANACH WIND FARM - EIA
ECOLOGY
HISTORIC AREAS OF
PEAT WITH NVC
FIGURE 8.2a

Scale: 1:25,000 @ A3 Date: JULY 2023

11223.00001.0363.0 Figure 8.2 Historic Areas of Peat with NVC



LEGEND

- Application Site Boundary
- Existing Access Track
- National Vegetation Classification Outline
- Peat Depth (m)**
- 0 - 0.5

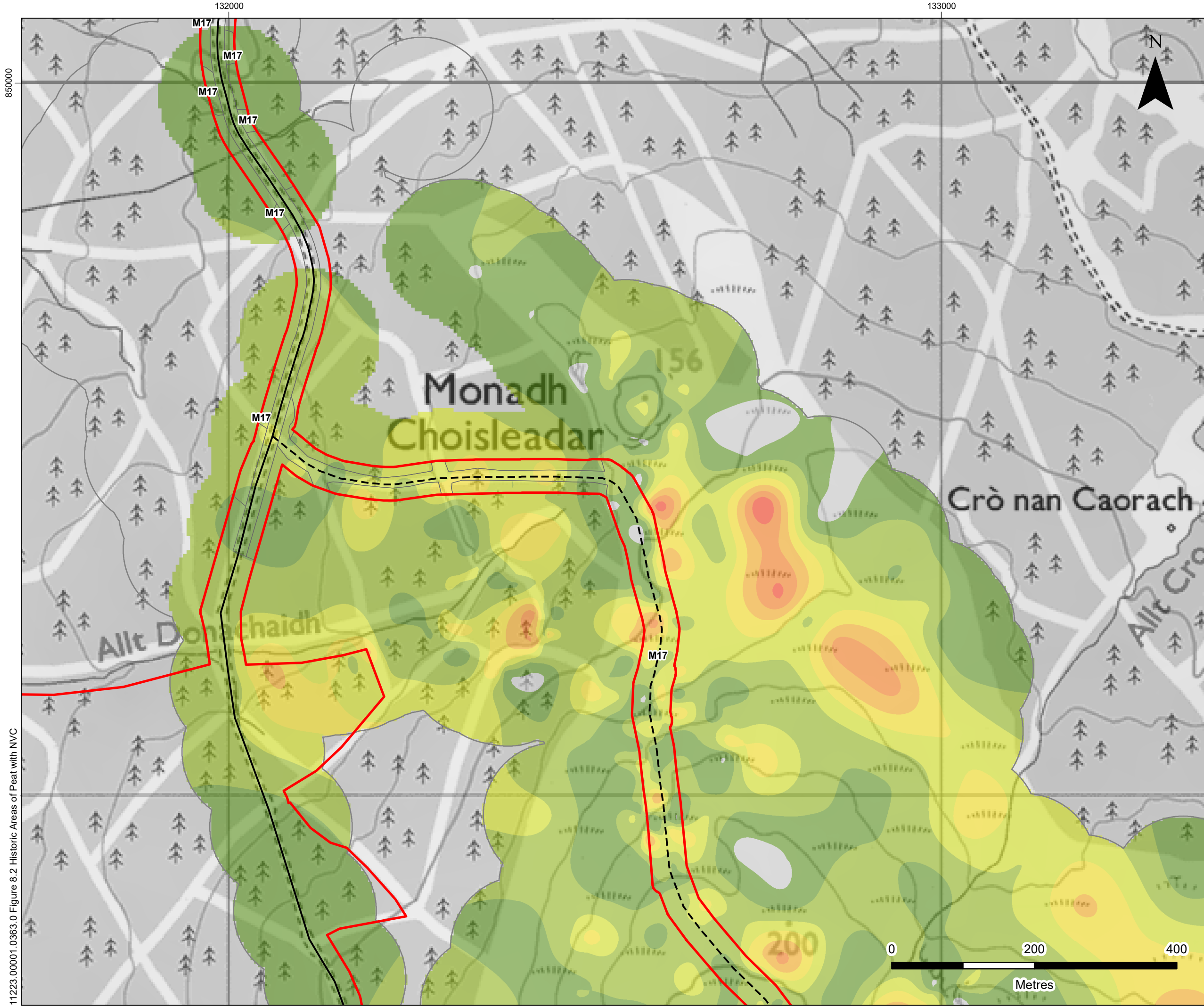
**BALMEANACH
WIND FARM LIMITED**

SLR
4/5 LOCHSIDE VIEW
EDINBURGH PARK
EDINBURGH
EH12 9DH
T: +44 (0)131 335 6830
www.slrconsulting.com

BALMEANACH WIND FARM - EIA
ECOLOGY
HISTORIC AREAS OF
PEAT WITH NVC
FIGURE 8.2b

Scale 1:5,000 @ A3 Date JULY 2023

11223.00001.0363.0 Figure 8.2 Historic Areas of Peat with NVC



LEGEND

- Application Site Boundary
- Existing Access Track
- Consented Access Track
- National Vegetation Classification Outline

Peat Depth (m)

- 0
- 0 - 0.5
- 0.5 - 1
- 1 - 1.5
- 1.5 - 2
- 2 - 2.5
- 2.5 - 3
- > 3

**BALMEANACH
WIND FARM LIMITED**

SLR

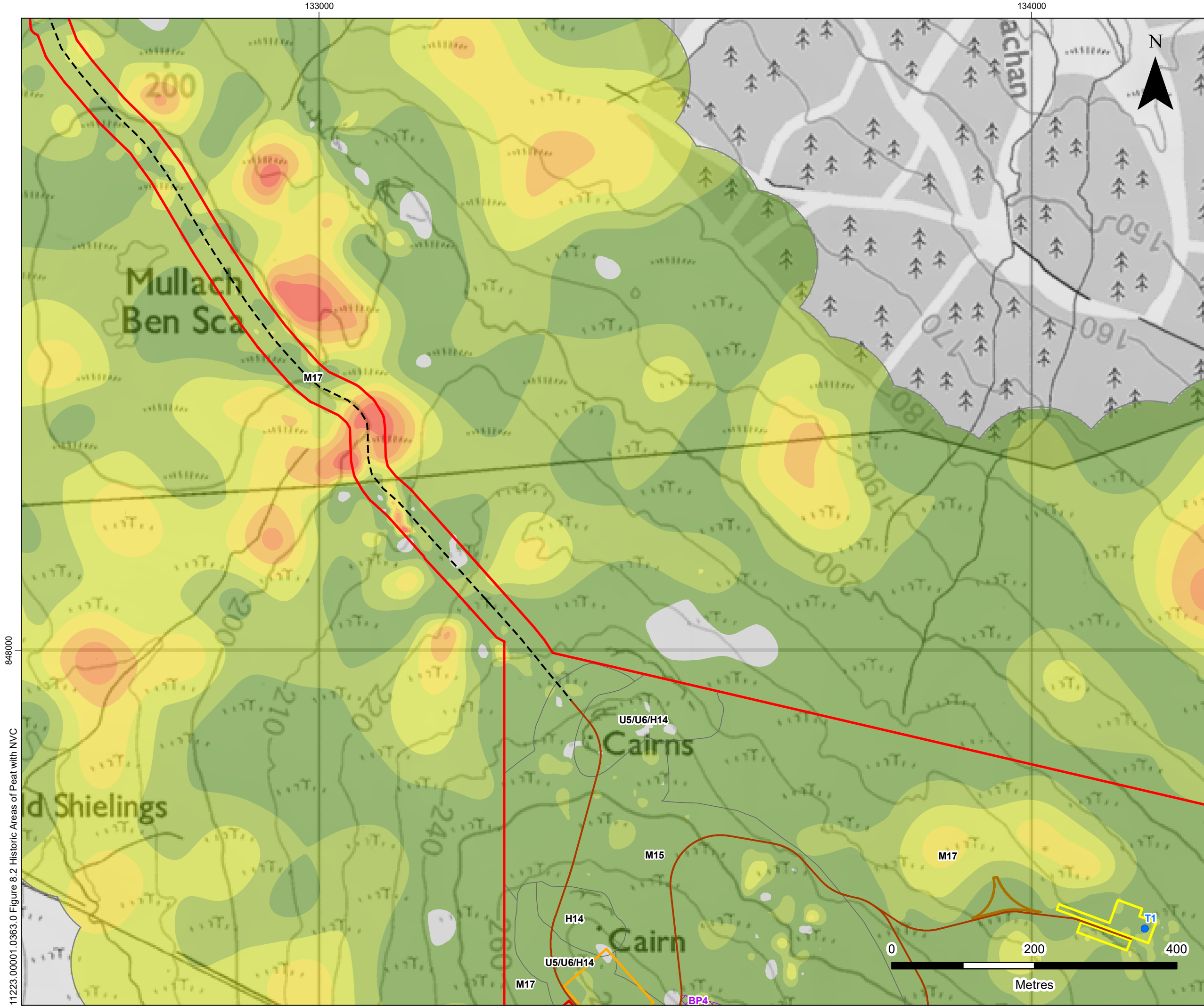
4/5 LOCHSIDE VIEW
EDINBURGH PARK
EDINBURGH
EH12 9DH

T: +44 (0)131 335 6830
www.slrconsulting.com

BALMEANACH WIND FARM - EIA
ECOLOGY
HISTORIC AREAS OF
PEAT WITH NVC
FIGURE 8.2c

Scale 1:5,000 @ A3 Date JULY 2023

11223.00001.0363.0 Figure 8.2 Historic Areas of Peat with NVC



LEGEND

- Application Site Boundary
- Proposed Turbine Location
- Proposed Crane Hardstanding
- Proposed Construction Compound
- Proposed Substation
- Proposed Turning Head
- Potential Borrow Pit
- Consented Access Track
- Proposed Track Alignment**
- Proposed
- National Vegetation Classification Outline
- Peat Depth (m)**
- 0
- 0 - 0.5
- 0.5 - 1
- 1 - 1.5
- 1.5 - 2
- 2 - 2.5
- 2.5 - 3
- > 3

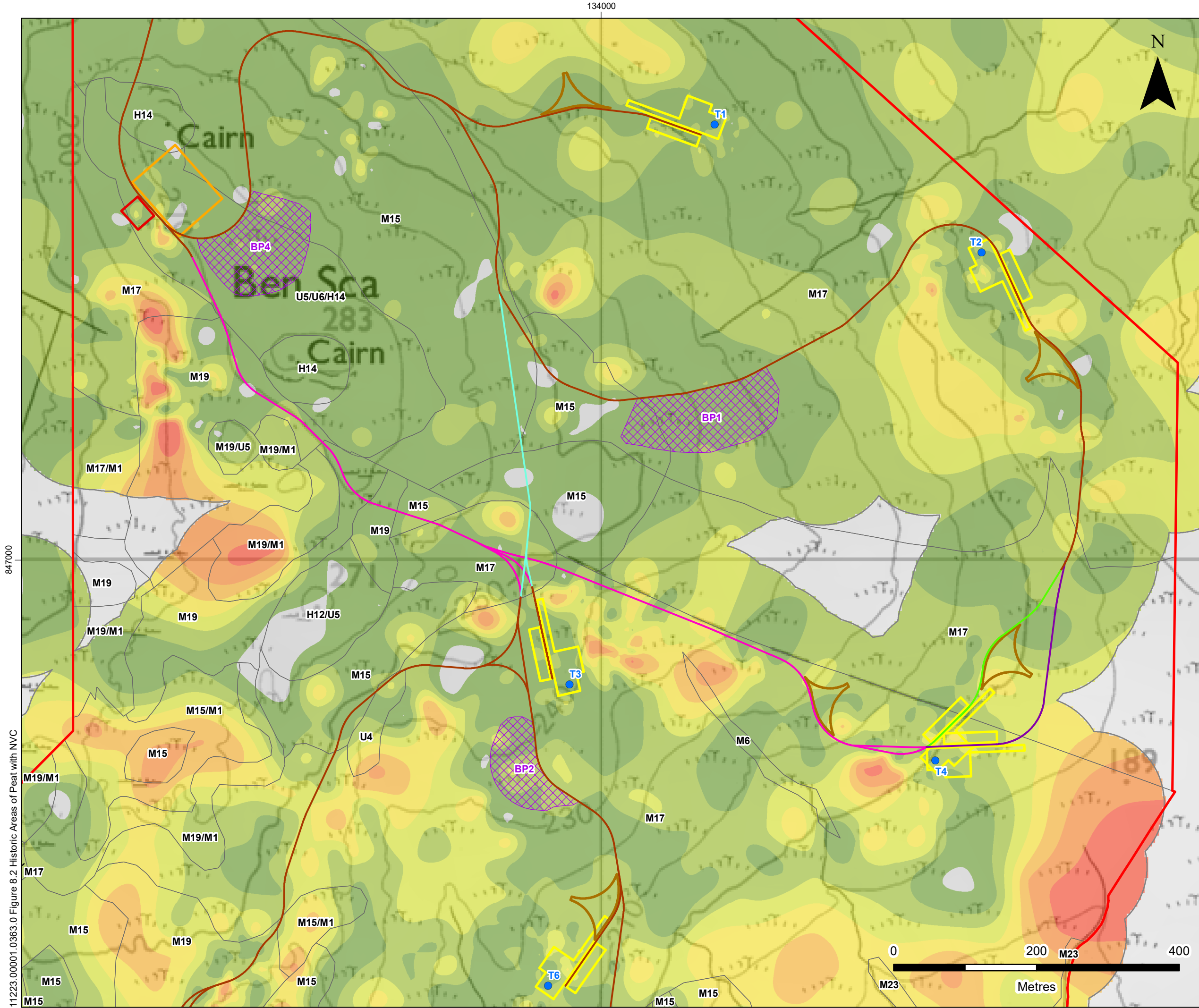
**BALMEANACH
WIND FARM LIMITED**

SLR 4/5 LOCHSIDE VIEW
EDINBURGH PARK
EDINBURGH
EH12 9DH
T: +44 (0)131 335 6830
www.slrconsulting.com

BALMEANACH WIND FARM - EIA
ECOLOGY
HISTORIC AREAS OF
PEAT WITH NVC
FIGURE 8.2d

Scale 1:5,000 @ A3 Date JULY 2023

11223.00001.0363.0 Figure 8.2 Historic Areas of Peat with NVC



LEGEND

- Application Site Boundary
- Proposed Turbine Location
- Proposed Crane Hardstanding
- Proposed Construction Compound
- Proposed Substation
- Proposed Turning Head
- Potential Borrow Pit
- Proposed Track Alignment**
- Proposed
- Proposed Option A
- Proposed Option A1
- Proposed Option A2
- Proposed Option B
- National Vegetation Classification Outline
- Peat Depth (m)**
- 0
- 0 - 0.5
- 0.5 - 1
- 1 - 1.5
- 1.5 - 2
- 2 - 2.5
- 2.5 - 3
- > 3

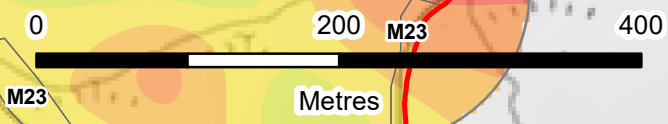


**BALMEANACH
WIND FARM LIMITED**

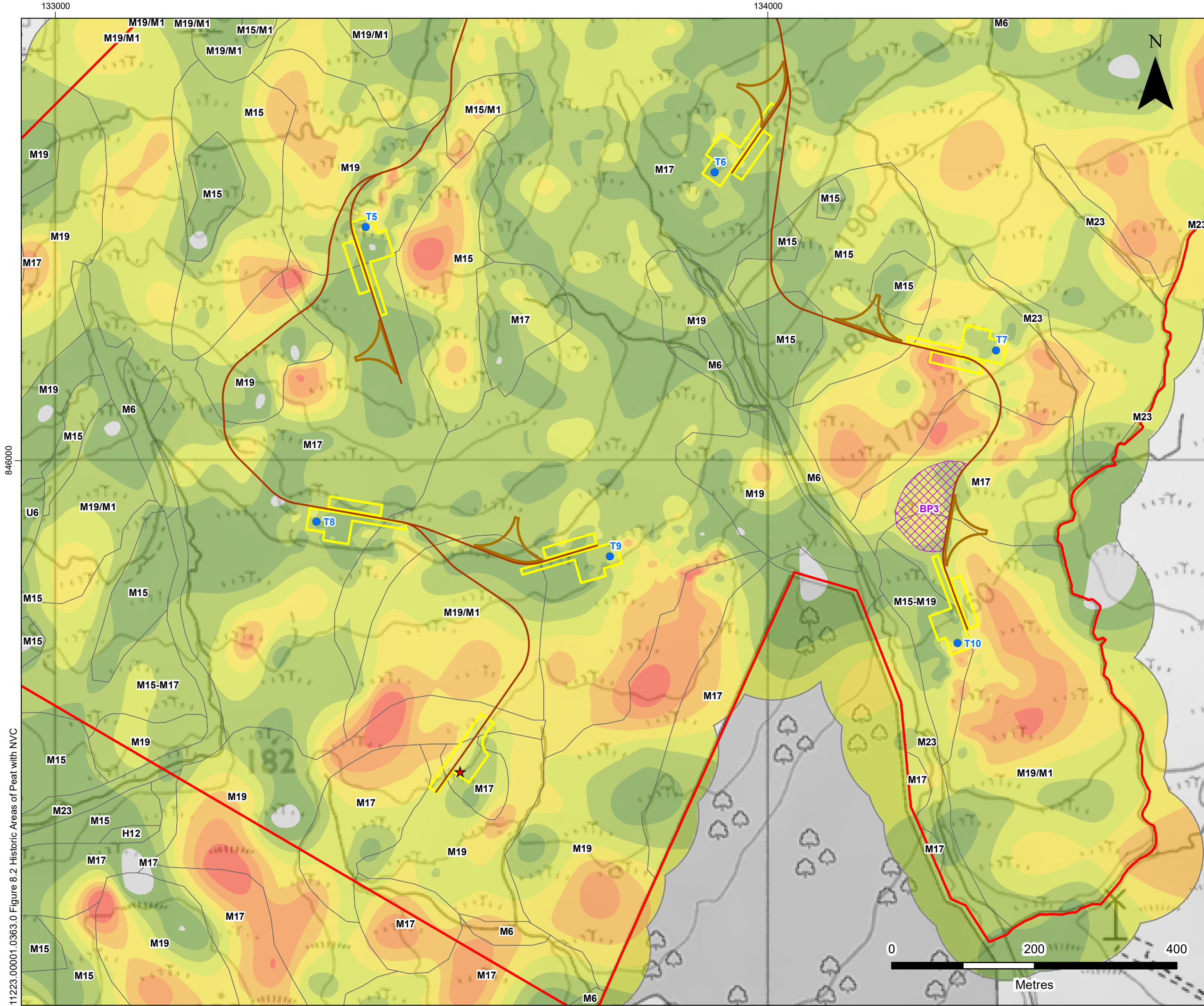
SLR
4/5 LOCHSIDE VIEW
EDINBURGH PARK
EDINBURGH
EH12 9DH
T: +44 (0)131 335 6830
www.slrconsulting.com

BALMEANACH WIND FARM - EIA
ECOLOGY
HISTORIC AREAS OF
PEAT WITH NVC
FIGURE 8.2e

Scale 1:5,000 @ A3 Date JULY 2023



11223.00001.0363.0 Figure 8.2 Historic Areas of Peat with NVC



LEGEND

- Application Site Boundary
- Proposed Turbine Location
- ★ Proposed Permanent Met Mast
- Proposed Crane Hardstanding
- Proposed Turning Head
- Potential Borrow Pit
- Proposed Track Alignment**
- Proposed
- National Vegetation Classification Outline
- Peat Depth (m)**
- 0
- 0 - 0.5
- 0.5 - 1
- 1 - 1.5
- 1.5 - 2
- 2 - 2.5
- 2.5 - 3
- > 3

**BALMEANACH
WIND FARM LIMITED**

SLR
4/5 LOCHSIDE VIEW
EDINBURGH PARK
EDINBURGH
EH12 9DH
T: +44 (0)131 335 6830
www.slrconsulting.com

BALMEANACH WIND FARM - EIA
ECOLOGY
HISTORIC AREAS OF
PEAT WITH NVC
FIGURE 8.2f

Scale 1:5,000 @ A3 Date JULY 2023

11223.00001.0363.0 Figure 8.2 Historic Areas of Peat with NVC

133000

134000

846000